

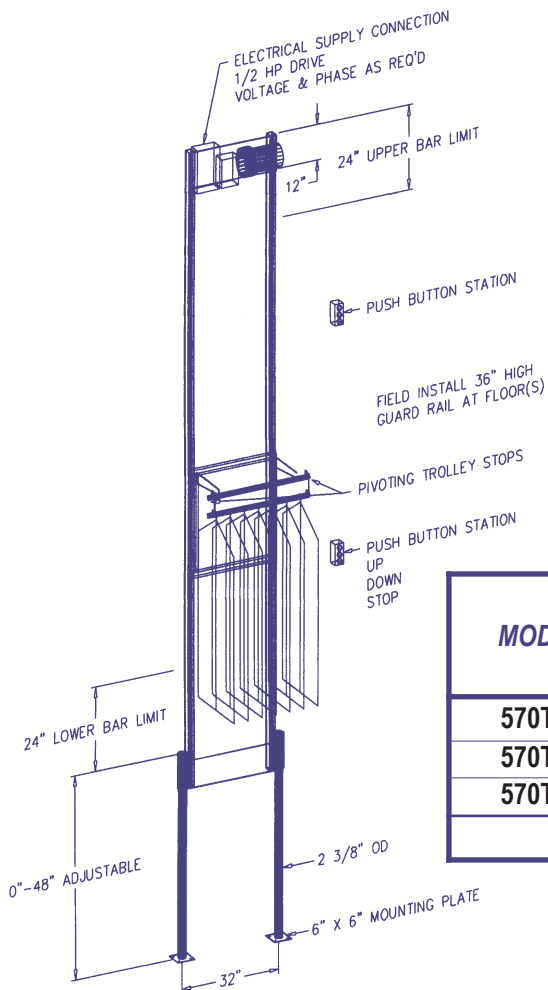
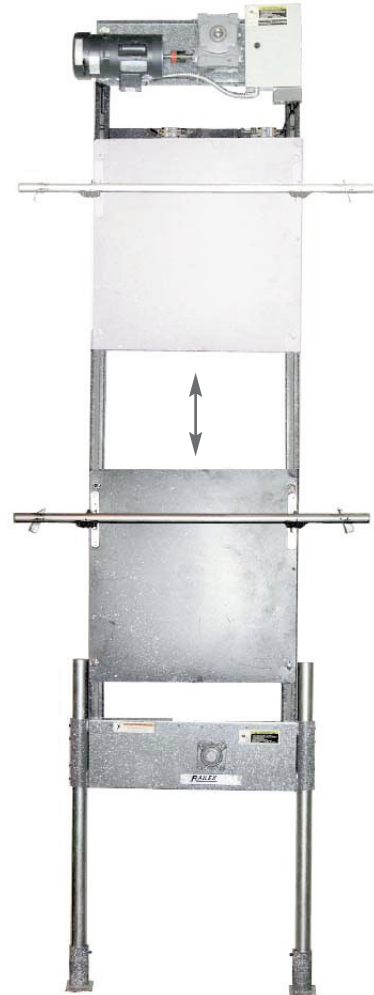
RAILEX[®] Corp.

System 570 T VERTICAL TROLLEY LIFT

The Railex System 570 T is designed to lift trolleys between two levels.

STANDARD EQUIPMENT

- ◆ Automatic adjustable stops for both levels
- ◆ Push button operation
- ◆ Brake motor for accurate positioning
- ◆ Automatic trolley entry stops
- ◆ 115/208/220 Volt; 1 or 3 ∅



MODEL	OVERALL HEIGHT		* UPPER TROLLEY A.F.F.		SHIPPING WEIGHT IN POUNDS
	MIN.	MAX.	MIN.	MAX.	
570T10	10'	14'	10'		635
570T15	15'	19'	15'		685
570T20	20'	24'	20'		735
* ABOVE LOWER FLOOR					