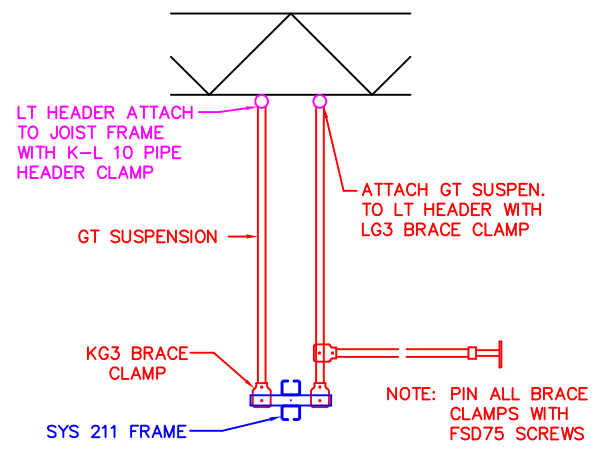
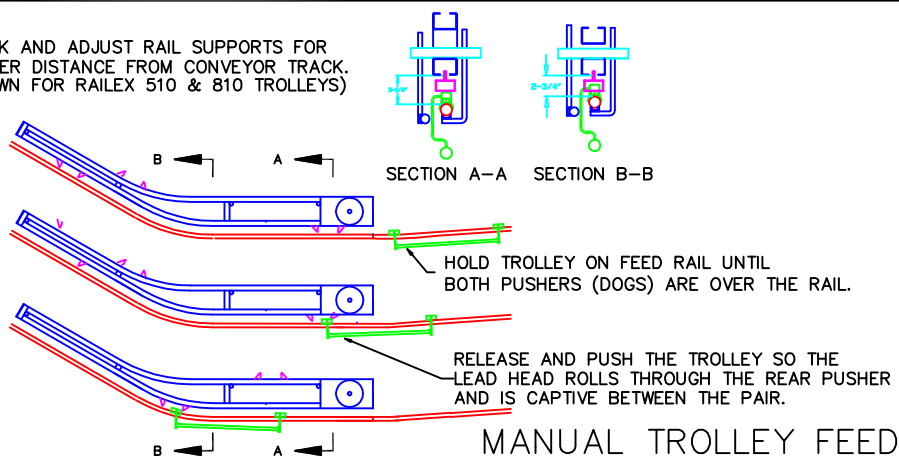


METHOD OF SUSPENSION FROM JOISTS PARALLEL TO CONVEYOR  
1" = 1'-0"



METHOD OF SUSPENSION FROM JOISTS PERPENDICULAR TO CONVEYOR  
1" = 1'-0"

CHECK AND ADJUST RAIL SUPPORTS FOR PROPER DISTANCE FROM CONVEYOR TRACK. (SHOWN FOR RAILEX 510 & 810 TROLLEYS)



NOTICE: THIS DRAWING AND DESIGN IS THE SOLE PROPERTY OF RAILEX CORP.

APPROVAL	DISTRIBUTION	SCALE: 1/4"=1'-0"
BY:	<input type="checkbox"/> OWNER <input type="checkbox"/> PRODUCTION	DRAWN BY: ALAN R
<input type="checkbox"/> AS IS <input type="checkbox"/> AS NOTED	<input type="checkbox"/> ARCHITECT <input type="checkbox"/> INSTALLATION	CHECKED BY:
DATE:	<input type="checkbox"/> FILE <input type="checkbox"/> CONTRACTOR	PROJ. ENG.:
		DATE: 2 JULY 2002
		DWG. NO. C
		TYP-IN-211

TYPICAL INSTALL METHODS WITH PARTS IDENTIFICATION  
SYS 211 TROLLEY BOOSTER

<b>RAILEX</b> Corporation		89-02 ATLANTIC AVE. QUEENS, NEW YORK 11416 (718) 845-5454
NO.	DATE	REVISIONS