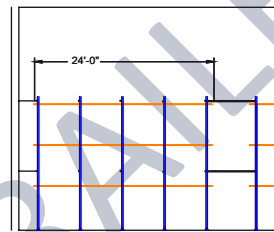
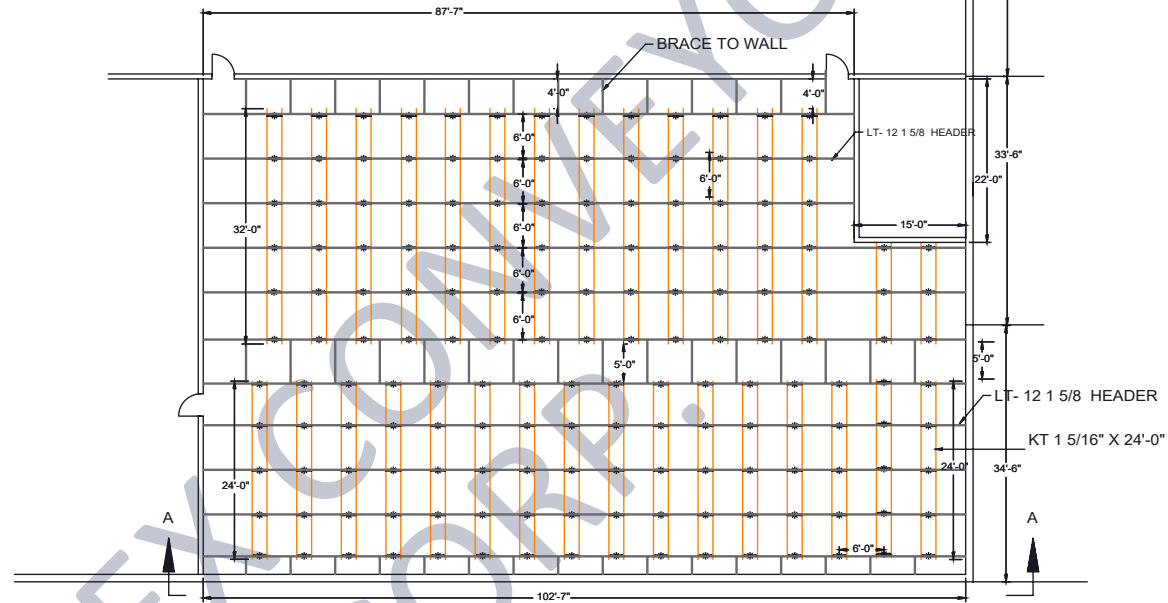
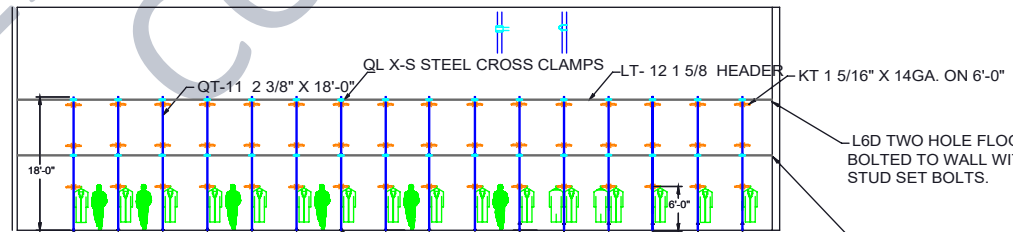


D C B A

CAPACITY:
 16 UNIT'S 24'-0" OVERALL LENGTH X 3 TIER X DOUBLE FACE = 2304 LIN/FEET.
 13 UNITS 32'-0" OVERALL LENGTH X 3 TIER X DOUBLE FACE = 2496 LIN/FEET
 2 UNITS 12'-0" OVERALL LENGTH X 3 TIER X DOUBLE FACE = 144 LIN/FT
 TOTAL = 4944 LIN/FT OF STORAGE



Side Elevation



Elevation A-A

L6D TWO HOLE FLOOR FLANGE
 BOLTED TO FLOOR WITH TWO HILT'
 STUD SET BOLTS.

L6D TWO HOLE FLOOR FLANGE
 BOLTED TO WALL WITH TWO HILT'
 STUD SET BOLTS.

L6D TWO HOLE FLOOR FLANGE
 BOLTED TO WALL WITH TWO HILT'
 STUD SET BOLTS.

DESCRIPTION:	RAILEX SYSTEM 200 GOH SLICK RAIL STOCK RACKS 3 TIER
DWG. #	18092
NOTICE: THIS DRAWING AND DESIGN IS THE SOLE PROPERTY OF RAILEX CORP.	



RAILEX CONVEYOR CORPORATION
 T. 718-845-5454
 railex@railexcorp.com
 www.railexcorp.com