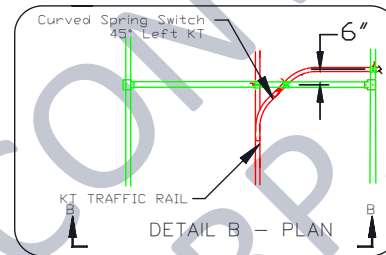
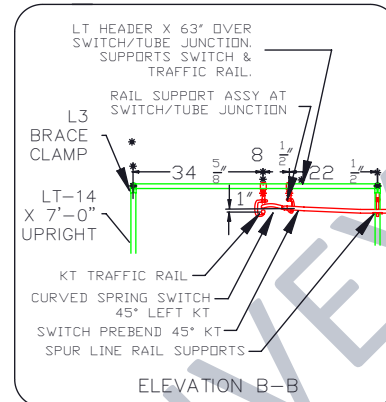
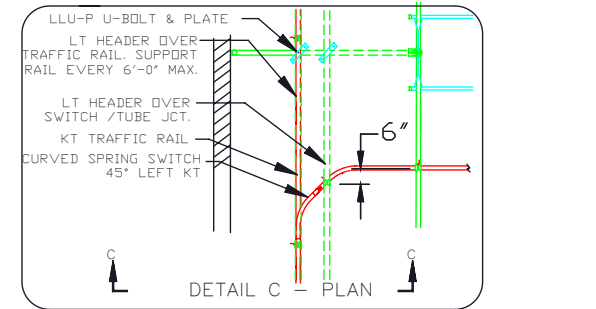
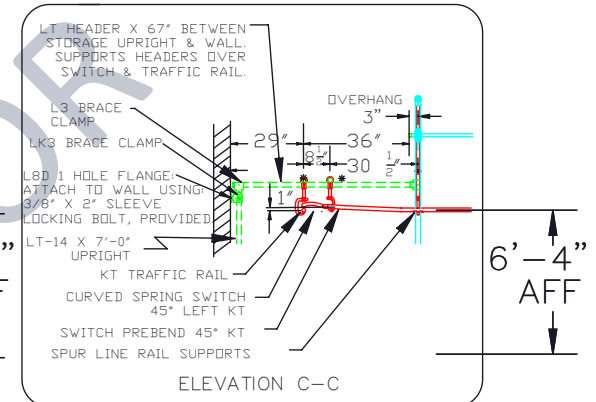


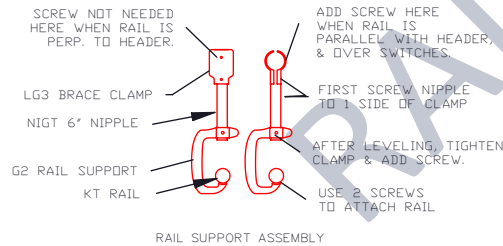
MASTER SWITCH INSTALLATION FROM HEADER OVER TRAFFIC RAIL.



CURVED SWITCH INSTALLATION WITH SWITCH HEADER PERPENDICULAR TO TRAFFIC RAIL.



CURVED SWITCH INSTALLATION WITH SWITCH HEADER PARALLEL TO TRAFFIC RAIL.



RAIL SUPPORT ASSEMBLY

CURVED SWITCH INSTALLATION PROCEDURE:

1. INSERT SWITCH INTO PREBEND & CLAMP KNUCKLE LEVEL WITH VISE GRIP.
2. LAY PREBEND IN SPUR LINE SUPPORTS, AND SET SWITCH TUBE ON TRAFFIC RAIL. ROTATING THE SWITCH DOWN AND THE PREBEND UP, YOU CREATE A SMOOTH RAMP FOR THE TROLLEY TO RIDE UPON. CLAMP THE SWITCH TO THE TRAFFIC RAIL, AND THE BEND TO THE SPUR SUPPORTS, USING VISE GRIPS.
3. NEXT WE FILL IN THE SWITCH RAIL SUPPORT. OVER THE JCT. OF THE SWITCH & TUBE, THE RAIL IS APPROX. 1" HIGHER, AND ON AN ANGLE. IT IS BEST TO BEND THE RAIL SUPPORT TO MATCH THE INCLINE, THEN POSITION IT SO THAT ONE OF THE SCREWS SECURING IT TO THE CRADLE WILL PENETRATE THE SOLID STEEL KNUCKLE AND THE OTHER WILL PENETRATE THROUGH THE TUBE INTO THE STEEL INSERT PORTION.
4. WHEN SWITCH SEEMS SET, VISE GRIP IT TO THE RAIL SUPPORT AND REMOVE THE VISE GRIP FROM THE TRAFFIC RAIL. MAKE FINAL ADJUSTMENTS TO ENSURE A SMOOTH RAMP & THEN DRILL THE TWO PILOT HOLES THROUGH THE SUPPORT & INTO THE KNUCKLE. USE A #17 OR #18 DRILL BIT.
5. IF ALL IS WELL, TIGHTEN ALL RAIL SUPPORTS, AND ADD SCREWS THROUGH THE RAIL SUPPORT INTO THE NIPPLE, & THROUGH THE BRACE CLAMP INTO THE HEADER.
6. CHECK THAT A TROLLEY CLEARS UNDER THE NIPPLE OR TRIM THE NIPPLE.

DESCRIPTION:

RAILEX SYSTEM 200 SLICK RAIL FOR GARMENT TROLLEY TYPICAL SWITCH INSTALLATION

DWG. #

96005

NOTICE: THIS DRAWING AND DESIGN IS THE SOLE PROPERTY OF RAILEX CORP.



RAILEX CONVEYOR CORPORATION

T. 718-845-5454

railex@railexcorp.com

www.railexcorp.com