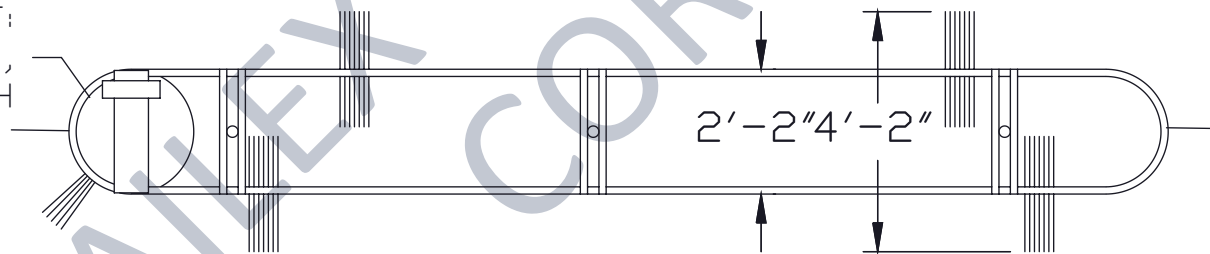



SIDE ELEVATION OF SYS 742-888

DRIVE UNIT:  
1/2 HP,  
115V. 1PH



PLAN VIEW OF SYS 742-888

NOTE: PROVIDE DISCONNECT SWITCH  
OR CIRCUIT BREAKER APPROX.  
5'-0" A.F.F., AT LOCATION  
CONVENIENT TO OPERATOR

<b>DESCRIPTION:</b>	RAILEX SYSTEM 742-888 CONVEYOR FOR GARMENT STORAGE	 <b>RAILEX</b> Corp. RAILEX CONVEYOR CORPORATION T. 718-845-5454 railex@railexcorp.com www.railexcorp.com
<b>DWG. #</b>	94159-RCL	
NOTICE: THIS DRAWING AND DESIGN IS THE SOLE PROPERTY OF RAILEX CORP.		