

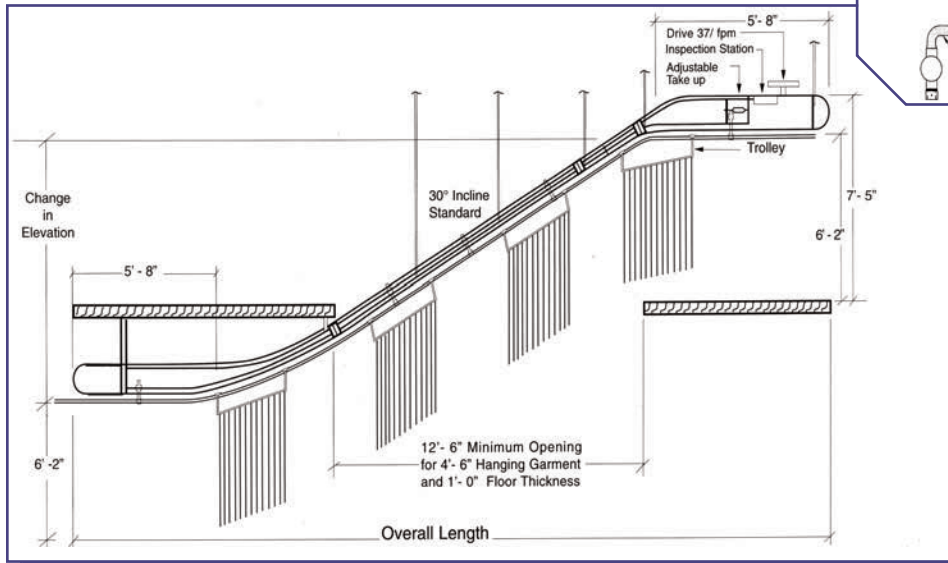
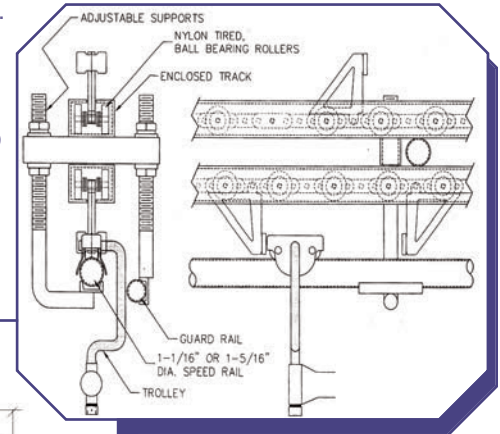
System 211

Inclined Conveyor for System 200 Trolleys



System 211 Powered Trolley Booster

is specifically designed for garment manufacturers, garment distribution centers, and uniform rental; to move trolleys between floors and between mezzanine and main floors. Suitable for continuous operation. High capacity, 37 ft./minute up, down, or both. Elevation changes to 20' - Incline 30°. Quiet, lubrication free operation.



Elevation Change (E.C.)	Overall Length Horizontal	H.P.
2'-0"	14'-9"	1/3
3'-0"	16'-6"	1/3
4'-0"	18'-3"	1/3
5'-0"	20'-0"	1/3
6'-0"	21'-9"	1/3
7'-0"	23'-5"	1/2
8'-0"	25'-4"	1/2
9'-0"	26'-11"	1/2
10'-0"	28'-8"	1/2
11'-0"	30'-5"	3/4
12'-0"	32'-1"	3/4
13'-0"	33'-10"	3/4
14'-0"	35'-7"	3/4
15'-0"	37'-4"	3/4
16'-0"	39'-1"	3/4
17'-0"	41'-9"	3/4
18'-0"	43'-6"	3/4
19'-0"	45'-2"	3/4
20'-0"	46'-10"	3/4

Specifications:

Power Track: Enclosed.
Chain: Ball bearing, nylon tired.
Drive: 37fpm.
Take up: Adjustable.
Pushers: Dual Pivoting.
Bi-directional capability
Incline: 30° standard.
Duty: Continuous or Intermittent.

Standard Equipment

- 1/3 - 3/4 hp, 115/208/220, 1 or 3 ø phase.
- Adjustable torque limiter.
- Bi-directional pivoting pushers every 8'.
- Adjustable take up.
- Guard Rail for incline.
- Trolley rail to match 1 1/16" or 1 5/16".

Specify: Electrical supply, change in elevation, and rail size.

Optional: Electrical control package including push button stations.

Full line sensor.
 Pneumatic trolley feeder.

