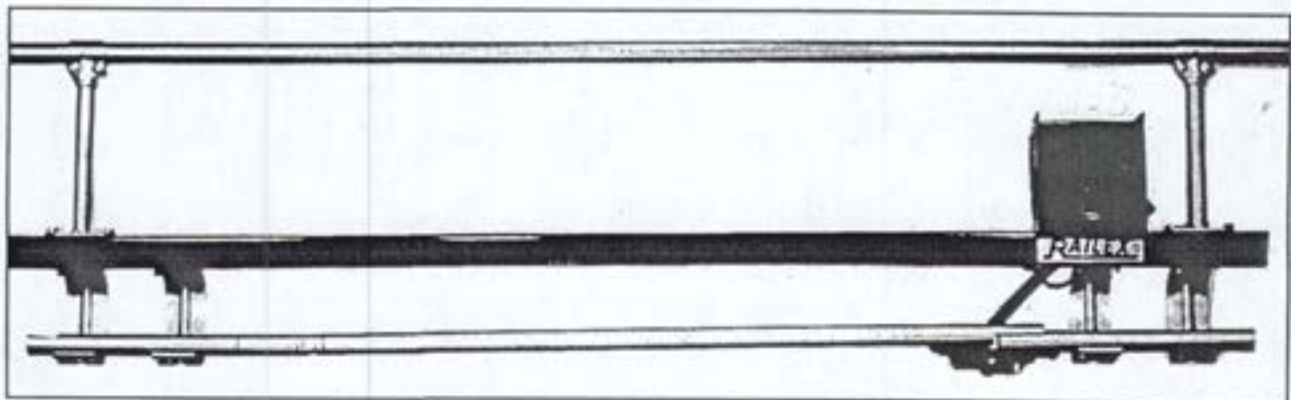
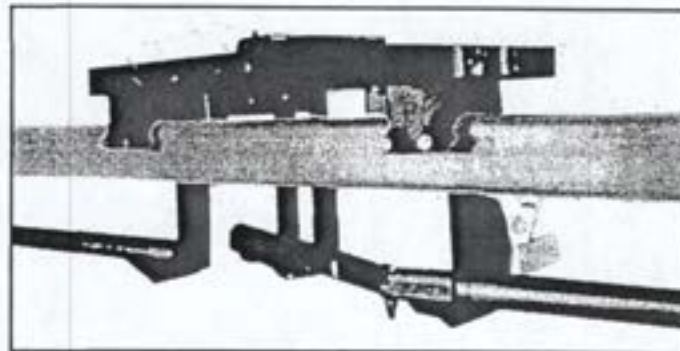


SYSTEM 200-215 FOR GARMENT CONVEYOR SYSTEMS



Switches ● Feeders ● Knuckles
Pendants ● Extractors ● Accessories

RAILEX[®]
CORP.

89-02 Atlantic Avenue Queens, N.Y. 11416-1497
FAX (718) 738.1020 (718) 845.5454

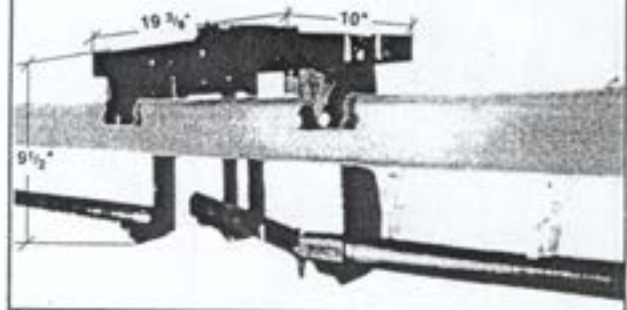
200-215 / 99

Master switches

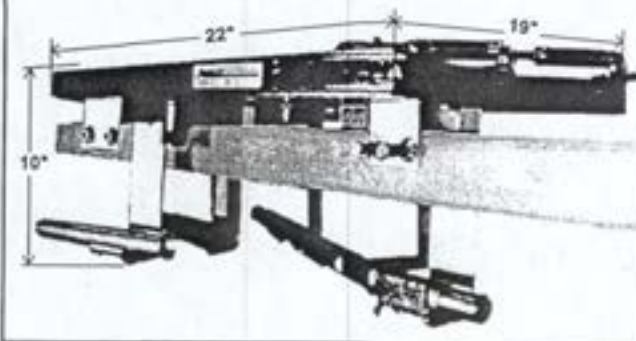
2 MS 2 2 Way Manual



21 MS 2 AP 2 Way Pneumatic Power and Free



21 MS 3 AP 3 Way Pneumatic Power and Free



- * All switches are for 1 1/16" O.D. (GT) and 1 5/16" O.D. (KT) rail size.
- * Air and power switches include CAM followers and receivers.
- * Power switches for use with 2 11/16" and 2 13/16" wide power track.
- * Air operated switches include 2 or 3 way pneumatic cylinders.
- * Air requirement: 2 way - .02 cu.ft. @ 50psi
3 way - .04 cu.ft. @ 50psi

2 WAY	OPERATION	RAIL
2 MS 2	MANUAL	FREE
21MS2 AF	AIR	FREE
21MS2 MP	MANUAL	POWER AND FREE
21MS2 AP	AIR	POWER AND FREE
3 WAY	OPERATION	RAIL
2 MS 3	MANUAL	FREE
21MS3 AF	AIR	FREE
21MS3 MP	MANUAL	POWER AND FREE
21MS3 AP	AIR	POWER AND FREE



RIGHT INSIDE
RI



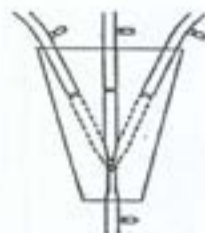
RIGHT OUTSIDE
RO



LEFT INSIDE
LI



LEFT OUTSIDE
LO

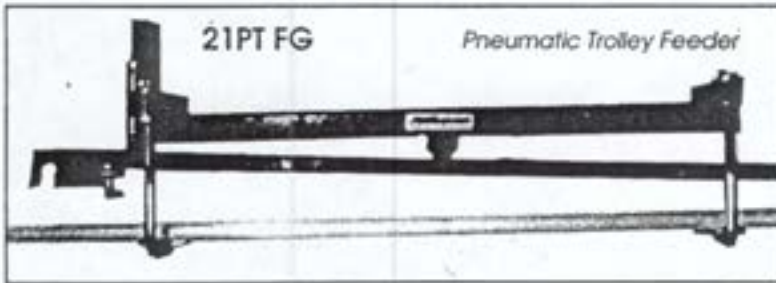


SUPPORTS RIGHT
SR



SUPPORTS LEFT
SL

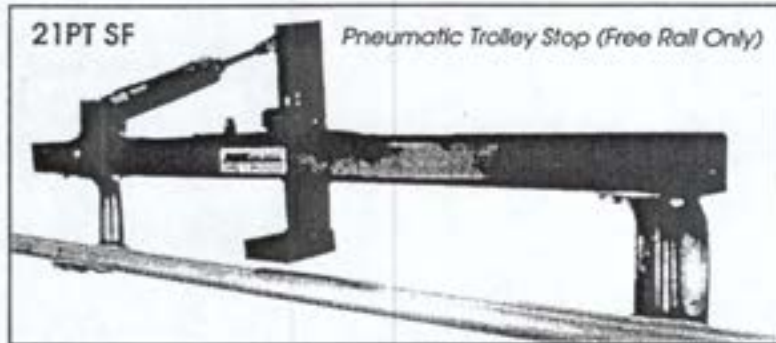
Powered and free rail system accessories



For controlling entry of trolley into the powered rail system.

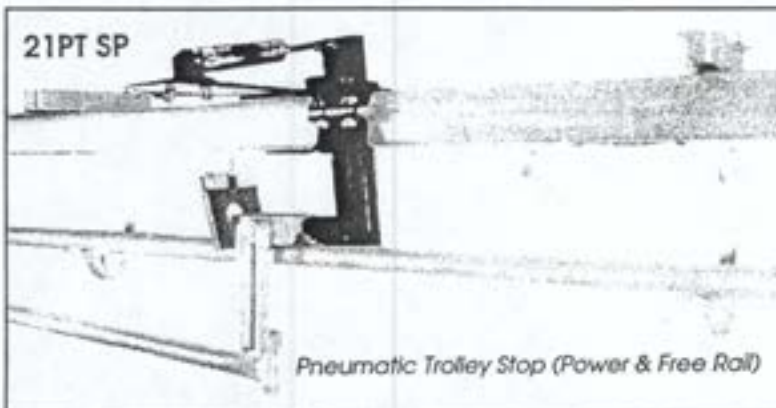
Includes pneumatic cylinder and tripping valve.

Air requirement: .01 cu. ft. @ 50psi.



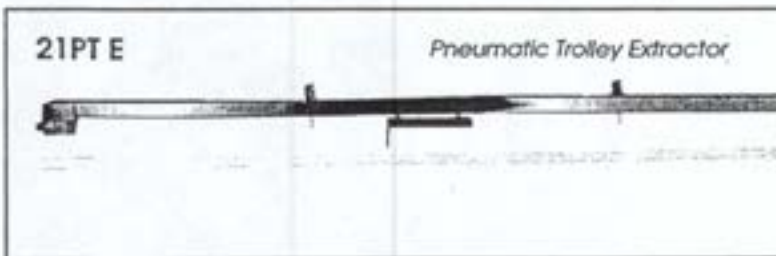
To stop and accumulate trolleys on a free rail.

Air requirement: .01cu. ft. @ 50psi.



To stop and accumulate trolleys on a power and free rail system using urethane pushers.

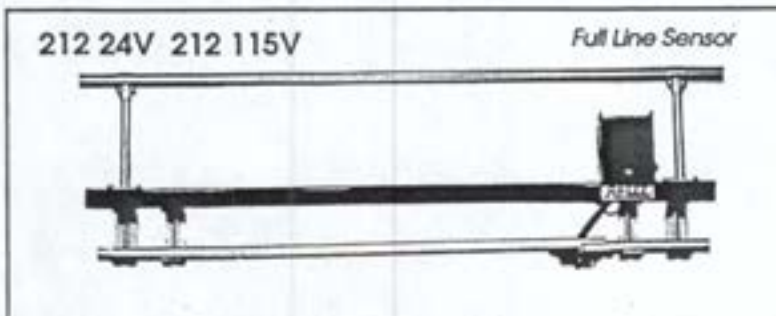
Air requirement: .01 cu. ft. @ 50psi



For extracting trolleys from master switch to branch rail.

Includes cylinder and tripping valve.

Air requirement: .45 cu. ft. @ 50psi.



Installs in discharge line of trolley booster.

Senses full line if trolley stops moving.

Stops movement of trolley booster.

Adjustment delay.

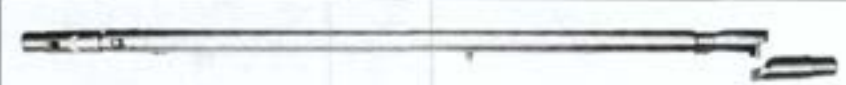
115v or 24v 50 or 60 cycles 10 amp. contacts

Rail Supports

 <p>PF2-13.5 Power/Free Rail Support FOR USE WITH SOFT PUSHERS</p>	 <p>PF2-11 Power/Free Rail Support</p>	 <p>GRPF2 Guard Rail Support for Power & Free</p>
 <p>21 TU-KT Take Up</p>		

Pushers

 <p>214RW-035</p>	 <p>211RX-035</p>	 <p>215JW-035</p>
 <p>21JW36 SWP with 3/8" Urethane Paddle</p>	 <p>21RW36 SWP with 3/8" Urethane Paddle</p>	



TELESCOPING DOCKING RAIL ~ TSS
To extend trolley rail into trucks equipped with rails.
Standard Length: 32" Extends to: 44"
Single Plane Telescoping - TSS-1
Multi-Plane Telescoping - TSS-2,3,4
Sizes: KT-KT, GT-GT, KT-GT

Knuckles Only

SPECIFY RAIL SIZE 1 1/4" O.D. (GT)
OR 1 3/4" O.D. (KT)

<p>2 KOSS Spring Switch</p> 
<p>2 KOLS Lever Switch</p> 
<p>2 KOLMS Master Switch</p> 
<p>2 KOHVH Hinged Knife Switch with Vertical Hold</p> 
<p>2 KORSS-2 Rack Swivel Telescopic Switch 2 Plane</p> 
<p>2 KORBF Removable Bar Flat Type</p> 
<p>2 KORBF-2 with Side Swivel</p> 
<p>2 KORBR Removable Bar Round Type</p> 
<p>2 KORBR-2 with Side Swivel</p> 
<p>2 KOSLB Sectional Loading Boom</p> 

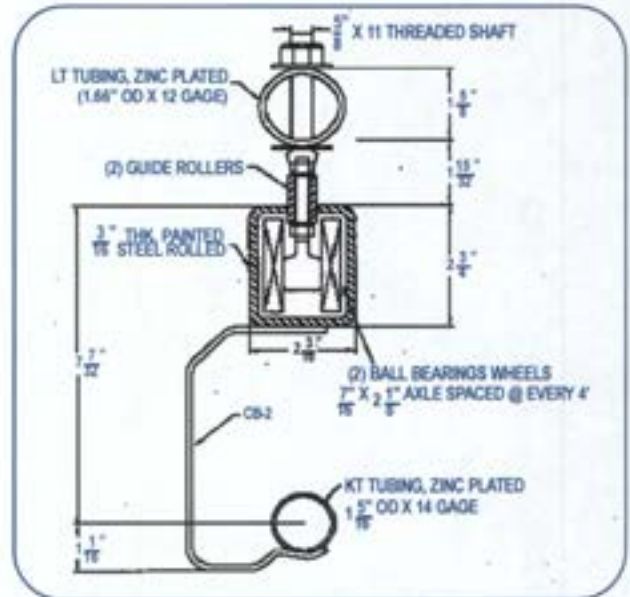
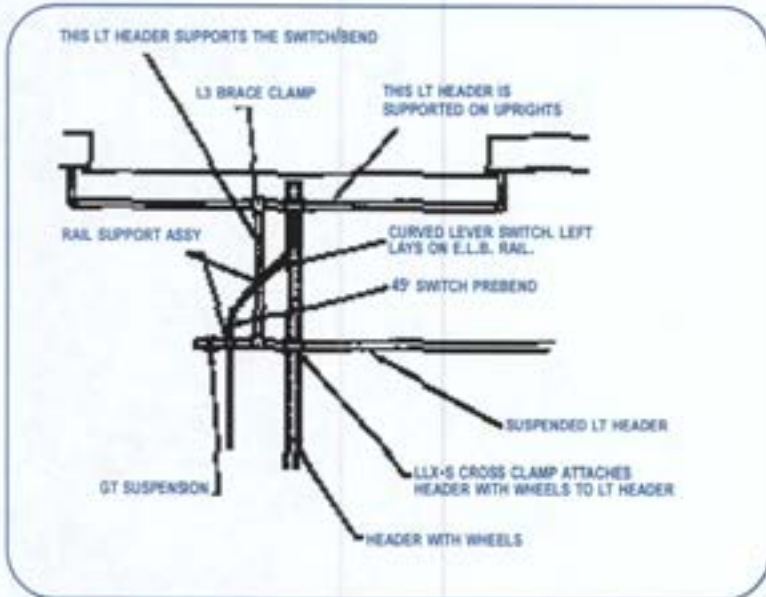
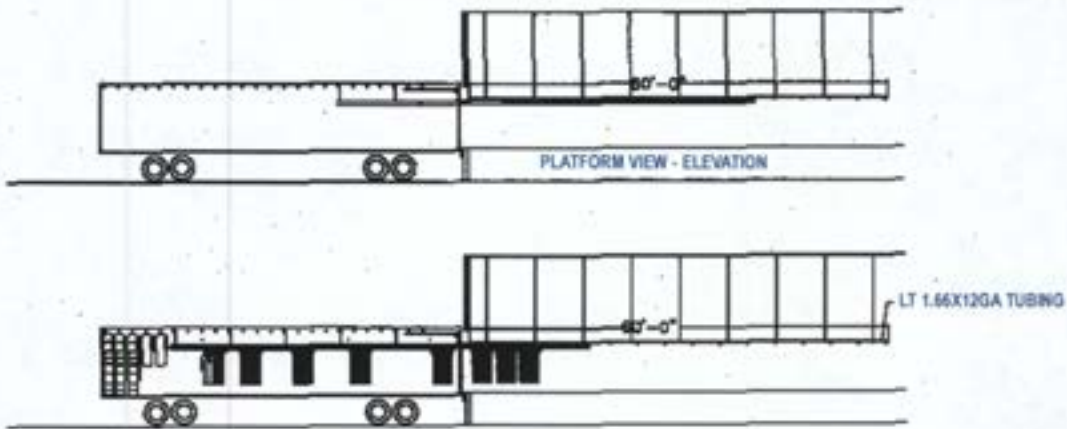
RAILEX Corp.

89-02 Atlantic Avenue, Ozone Park, NY 11416 + Tel: (718) 845.5454 - Fax: (718) 738.1020

Extendible Loading Boom (ELB)



To extend trolley rails into trailers. Furnished with roller hangers for temporary suspension in trailers while in loading docks. Headers and supports are Zinc plated. Channels are painted.



RAILEX Corp.

89-02 Atlantic Avenue, Ozone Park, NY 11416 • Tel: (718) 845-5454 • Fax: (718) 738-1020

ELB 7.04