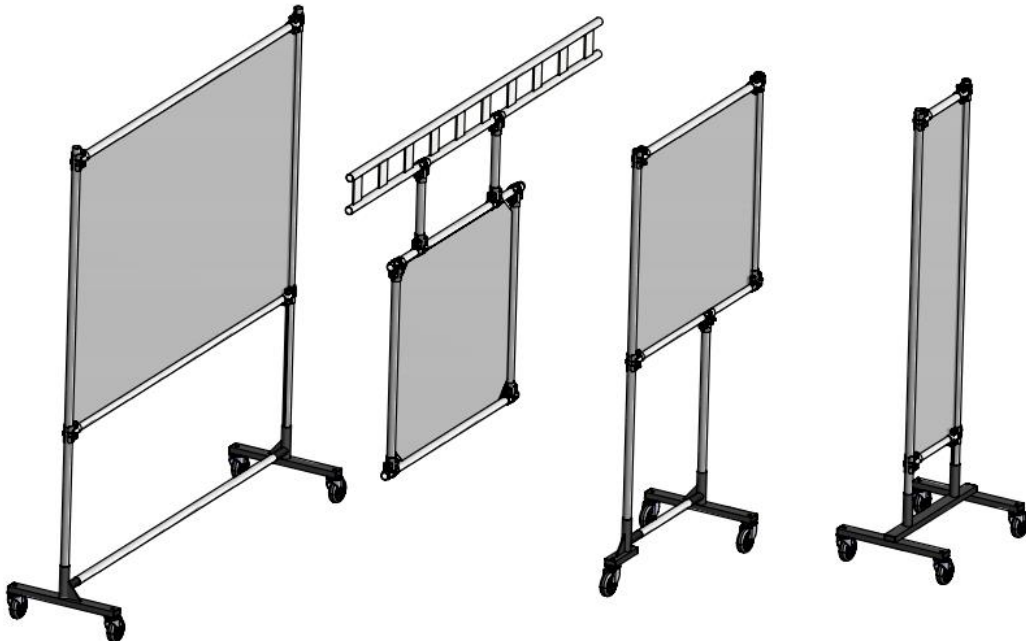


RAILEX PPE: ROLLING, STATIONARY, AND CEILING SUPPORTED AREA GUARDS

Since 1954 Railex Conveyor Corp. has been a leader in the manufacturing of material handling equipment. We have thousands of installations across the country. Part of our expertise is in rolling stock and ceiling suspended systems. In response to the COVID-19 pandemic we have leveraged that expertise and experience to develop our line of PPE Area Guards.

- ♦ Area Guard frames are made with a heavy-duty steel frame that is 14 and 12 gauge thick.
- ♦ The base of each Area Guard is 100% welded construction for durability.
- ♦ The optically clear shields are high impact and withstand being hit with a 2x4 without shattering, cracking, or chipping.
- ♦ The Area Guards roll on high quality 4" casters with ball-bearing load points that can handle any flooring surface.

Each Area Guard comes standard with 1 or 2 locking casters so the Area Guards stay in place once you position them.



Railex Conveyor Corp.

15 Ralph Ave

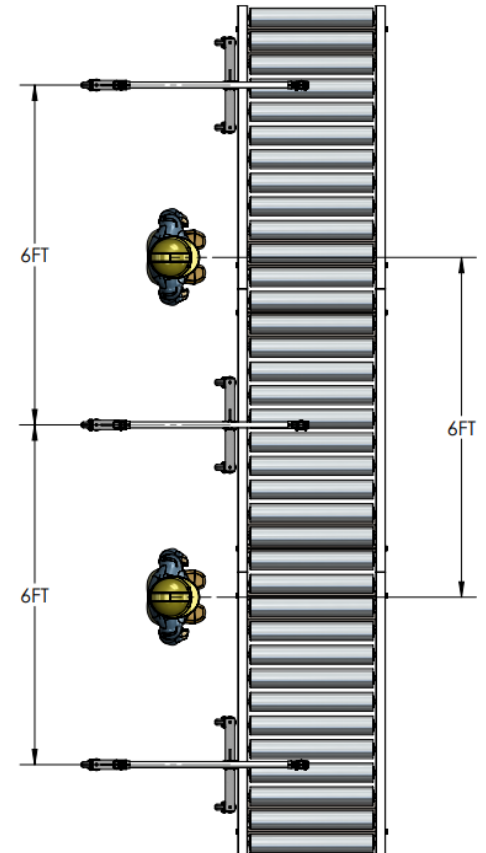
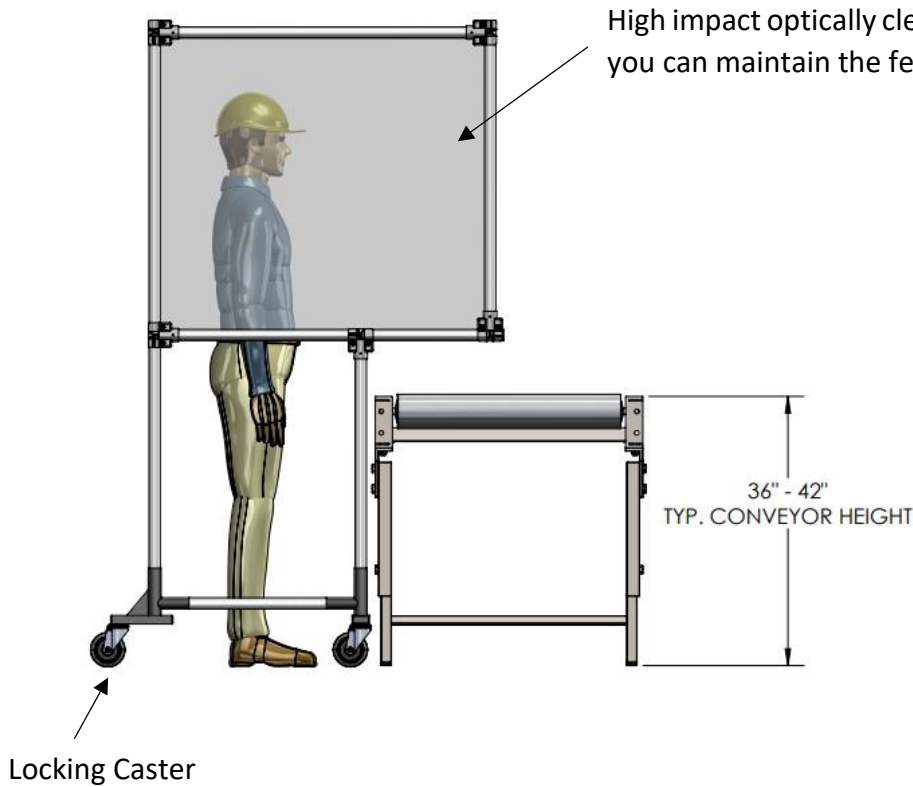
Copiapue NY, 11726

T: 718-845-5454

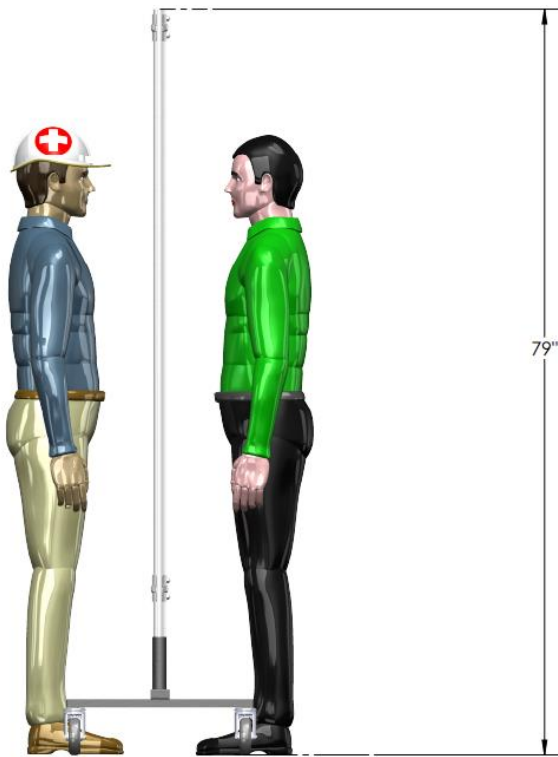
www.railexcorp.com

www.railexfaceshield.com

Cantilever Area Guard: Ideal for any work bench, conveyor belt, assembly line, packing line, processing line or counter where people need to be shielded when they lean over the work-space or counter top. These are available in 3 standard heights depending on the height of your work surface

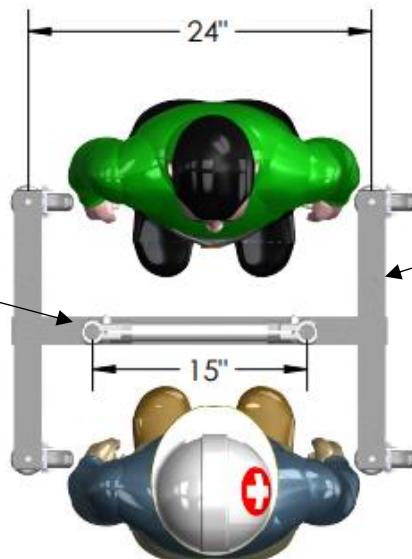


15" Wide Area Guard: The 15" wide Area Guard is wide enough to protect your face, but narrow enough so that you can reach around with your hands and examine or work on someone.



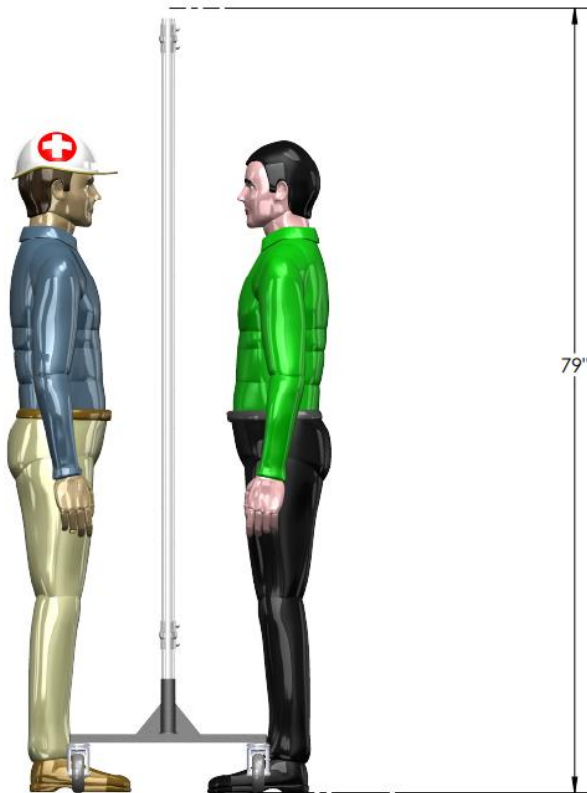
2 Locking casters

The 15" width lets you reach around and examine someone with your hands

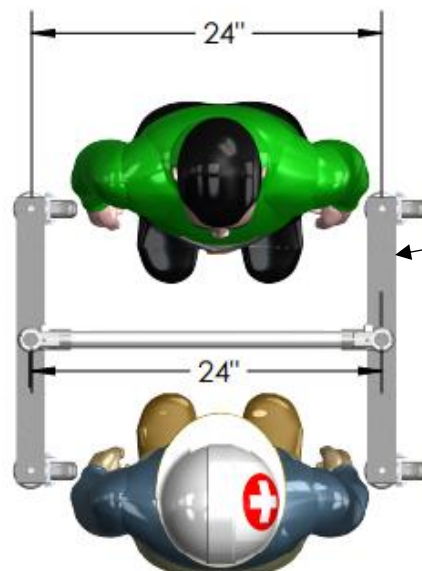


The 24" wide base allows for standing in between supports.

24" Wide Area Guard: The 24" wide Area Guard allows you to get close and examine someone with an added degree of width protection. Ideal when you do not need to touch or come into contact with someone but you need to do a close-up visual examination.

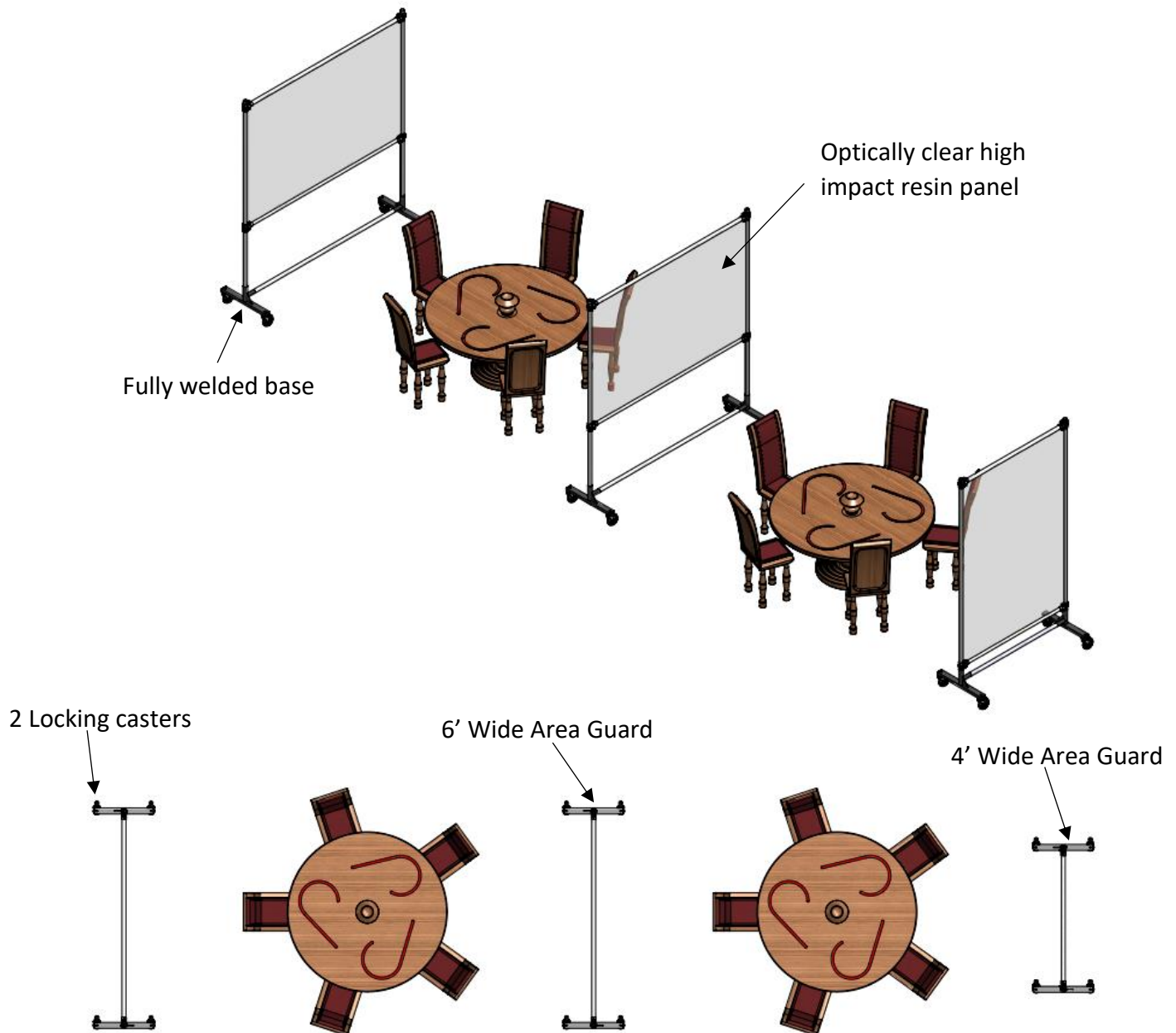


2 Locking casters

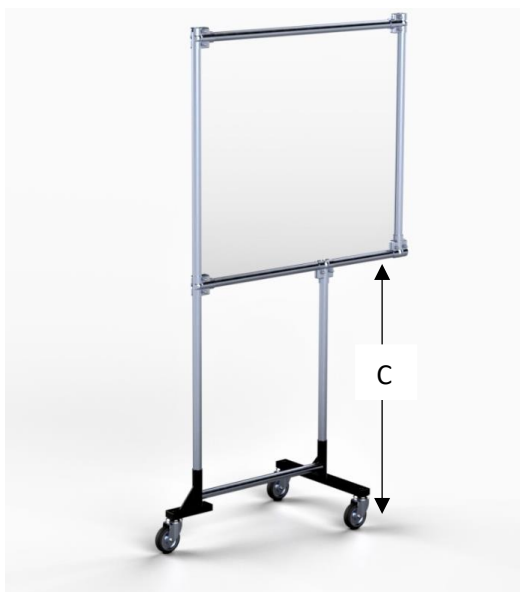


24" Wide base
(same as 15")

6' and 4' Wide Area Guard: These larger Area Guards are the perfect way to provide separation in large areas. They can easily be moved and re-configured as your needs change. Restaurants, open plan offices, and line formation needs will find the flexibility of moving the Area Guard ideal as their needs change. The heavy-duty construction means that they take commercial abuse for years without failing.



Cantilever Area Guard



Item	Part Number
Cantilever Area Guard 38" Clearance Galvanized Finish	1350-3W6T38-G-C
Cantilever Area Guard 42" Clearance Galvanized Finish	1350-3W6T42-G-C
Cantilever Area Guard 48" Clearance Galvanized Finish	1350-3W6T48-G-C

15" Wide Area Guard:



Item	Part Number
15" Wide Area Guard Galvanized Finish	1350-1W4T-G-F
15" Wide Area Guard Black Finish	1350-1W4T-B-F

24" Wide Area Guard



Item	Part Number
24" Wide Area Guard Galvanized Finish	1350-2W4T-G-F
24" Wide Area Guard Black Finish	1350-2W4T-B-F

Railex Conveyor Corp.

15 Ralph Ave

Copliague NY, 11726

T: 718-845-5454

www.railexcorp.com

www.railexfaceshield.com

6' Wide Area Guard



Item	Part Number
4' Wide Area Guard Galvanized Finish	1350-4W6T-G-F



Item	Part Number
6' Wide Area Guard Galvanized Finish	1350-6W6T-G-T

Ceiling Suspended Area Guard



Item	Part Number
Ceiling Suspended Area Guard Galvanized Finish	1380-3W3T-G-S

Railex Conveyor Corp.

15 Ralph Ave

Copliague NY, 11726

T: 718-845-5454

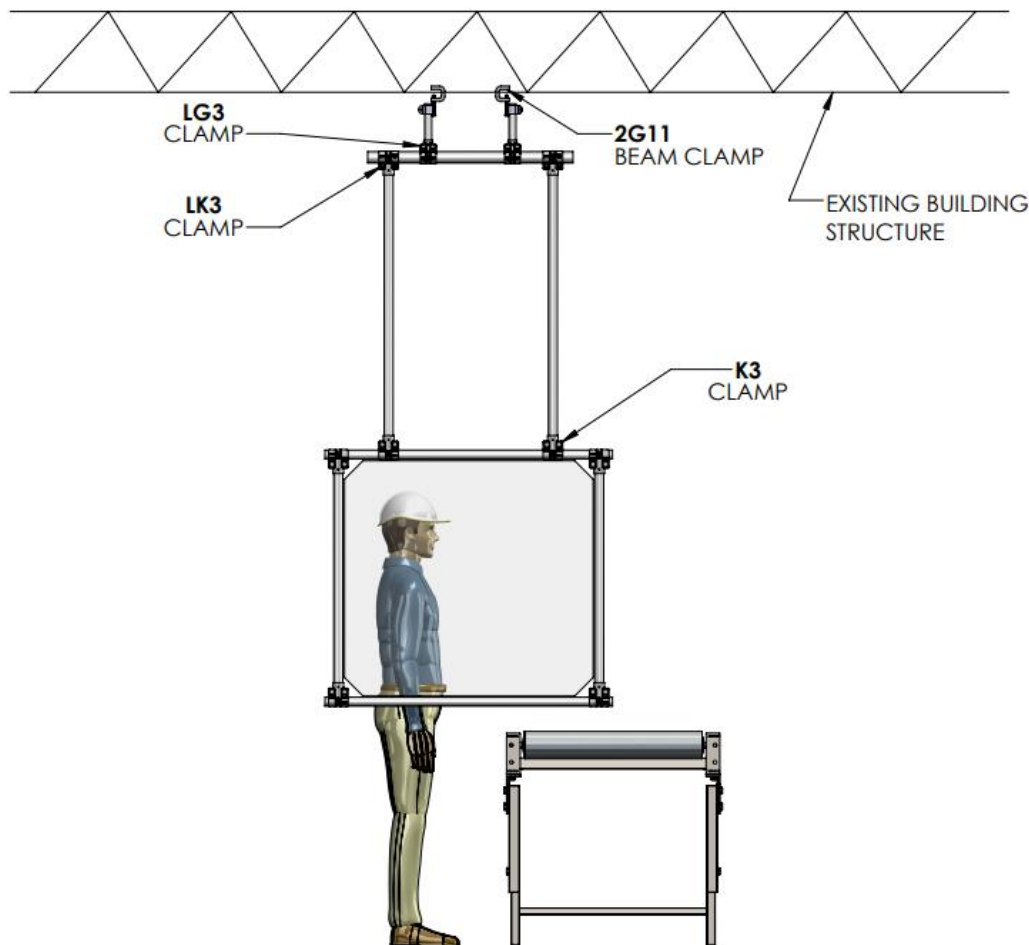
www.railexcorp.com

www.railexfaceshield.com



Ceiling Suspended Area Guard

Typical installation



Since 1954 Railex has delivered solutions in the material handling world. Our area guards are high quality and built to last. We can make them in custom configurations if the quantity justifies it. We can also manufacture them in stainless steel. Please reach out to us with your questions and comments if you don't see what you need.

Stay connected!



Railex Conveyor Corp.

15 Ralph Ave

Copiapue NY, 11726

T: 718-845-5454

www.railexcorp.com

www.railexfaceshield.com