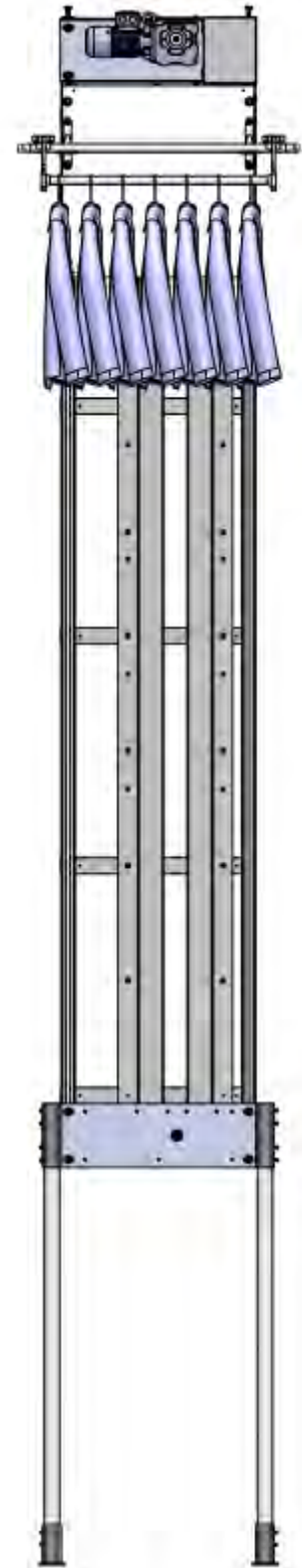


RAILEX SYSTEM 570 VERTICAL LIFT

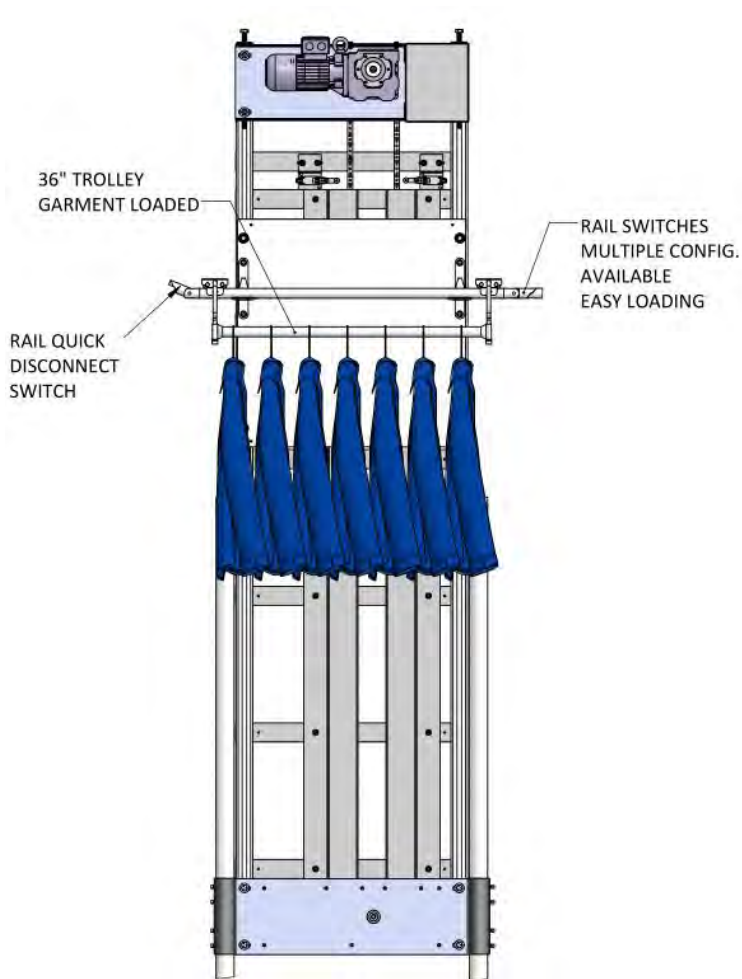


◆ Overview

◆ Exploded Views

OVERVIEW

Railex System 570 Vertical Lifts allow easy garment transportation between floor levels. Operating height can be configured to fit your exact needs. Modular securing systems available offer a wide range of compatibilities to minimize on-site modifications. Multiple garment loading configurations available to facilitate mass garment flow. Reliable drive system ensures a long operating life and smooth power transmission. Multitude of electronic controls are available.



TROLLEY LOADED CONFIGURATION

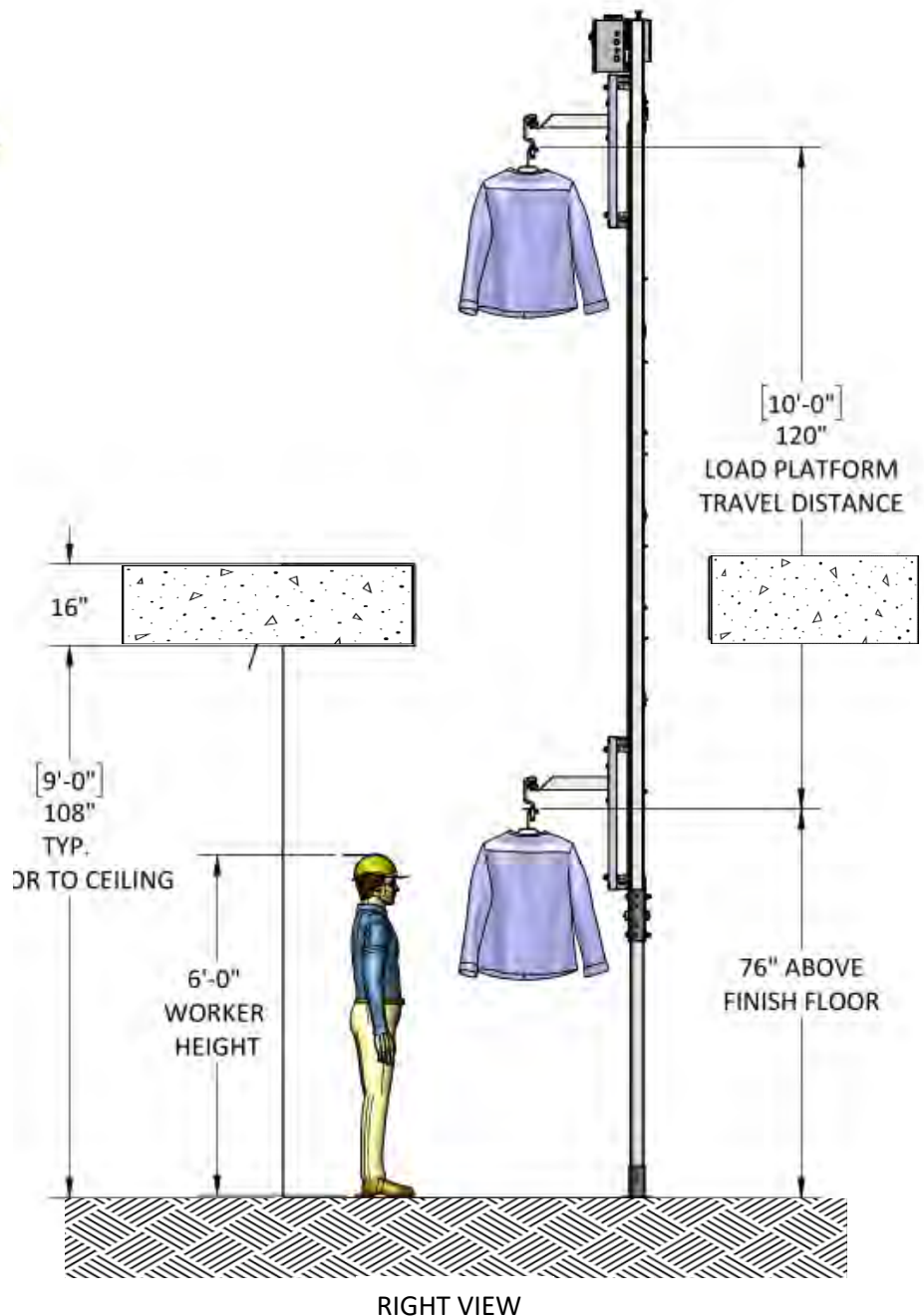
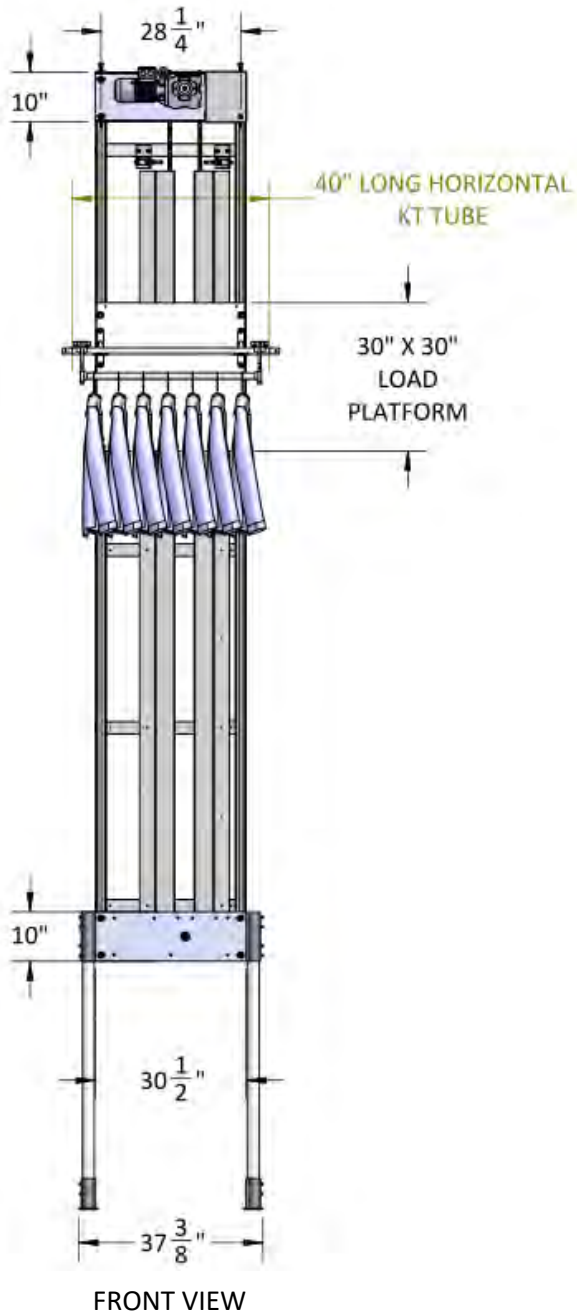


FIXED RAIL CONFIGURATION

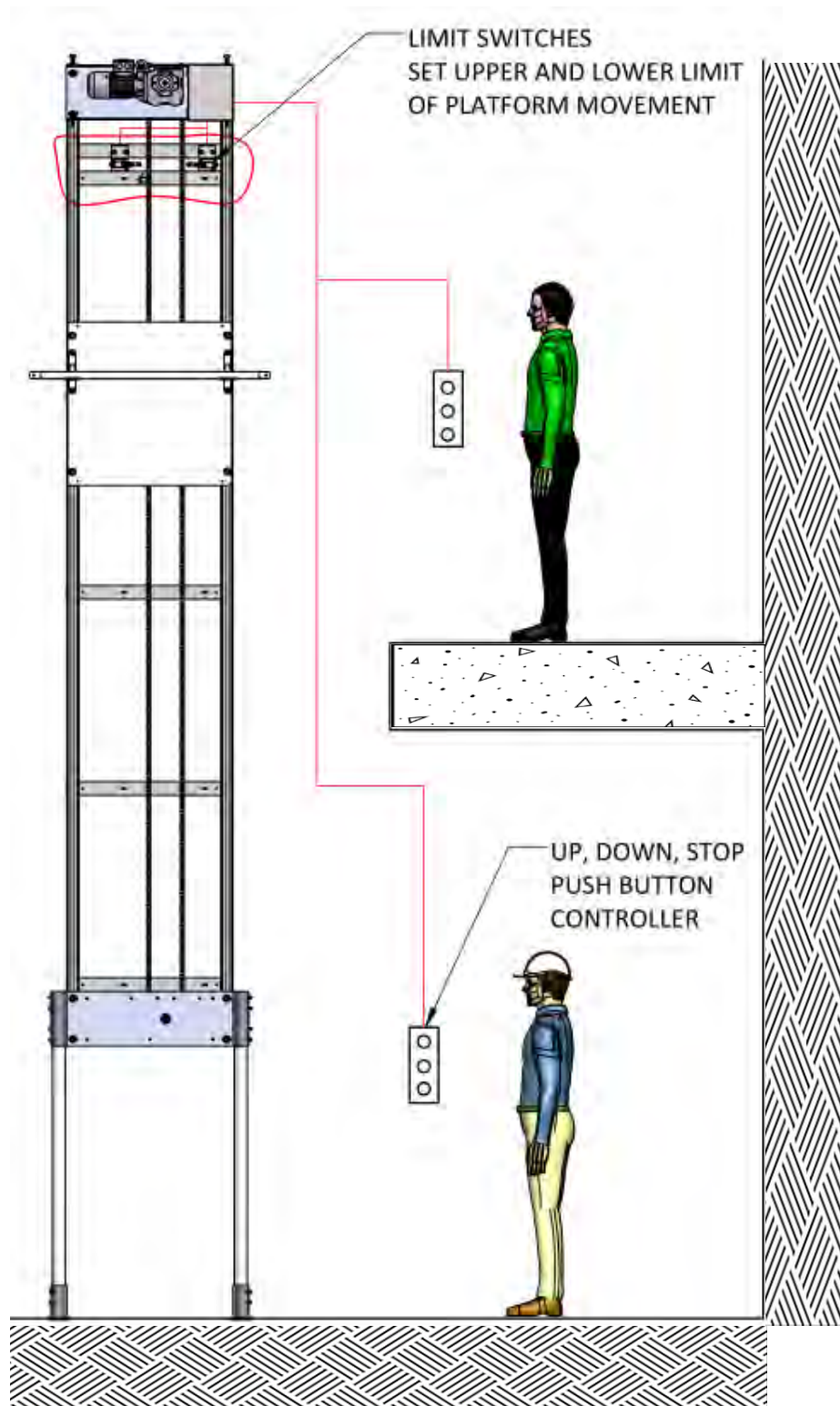
OVERALL MACHINE DIMENSIONS

Overall vertical dimension not stated due to a variety of vertical adjustments and configurations available.

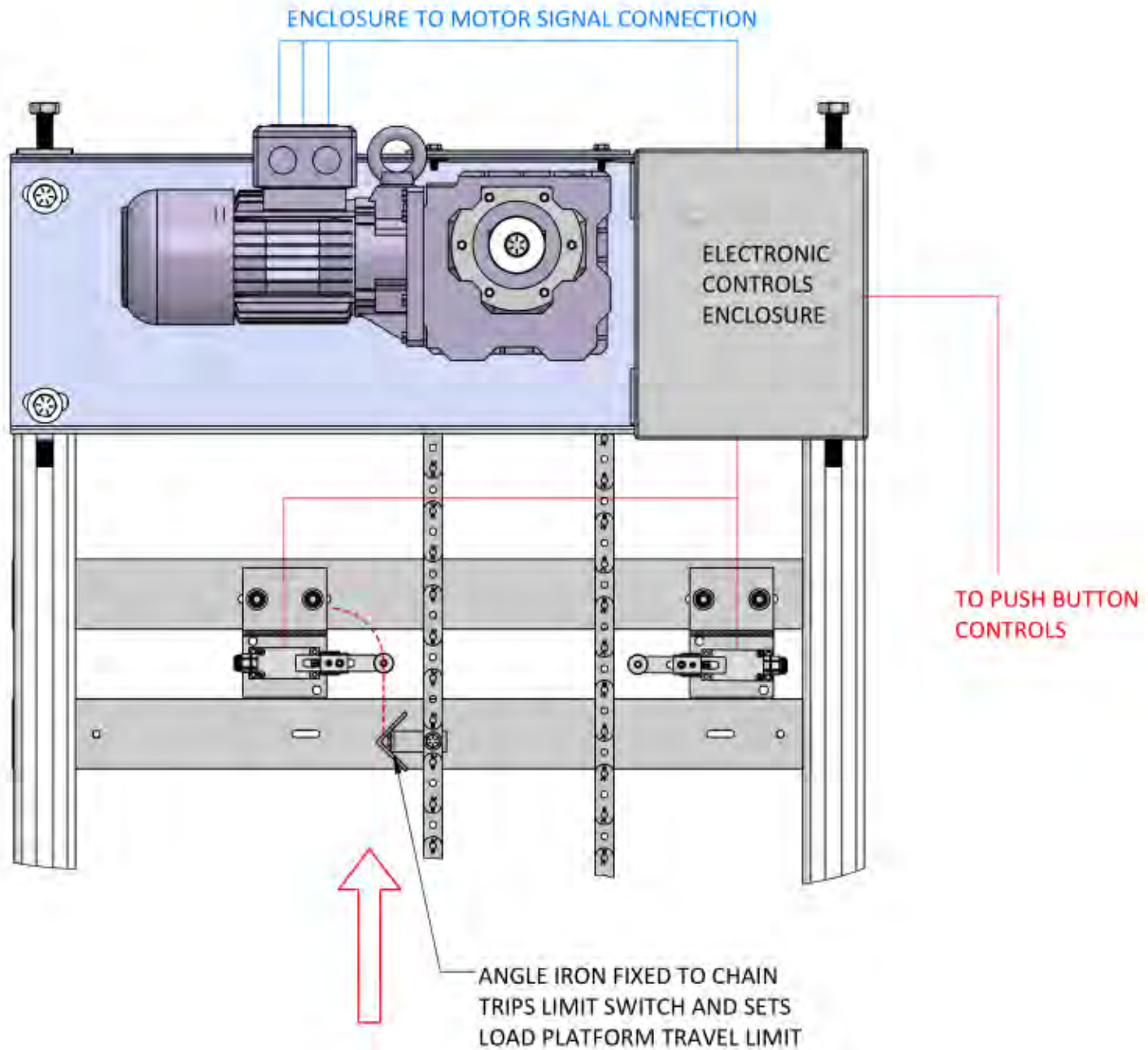
Load Platform dimensions and horizontal width of machine are fixed, however, the attached garment loading arm and/or trolley can come in custom lengths to fit your needs.



MACHINE OPERATION



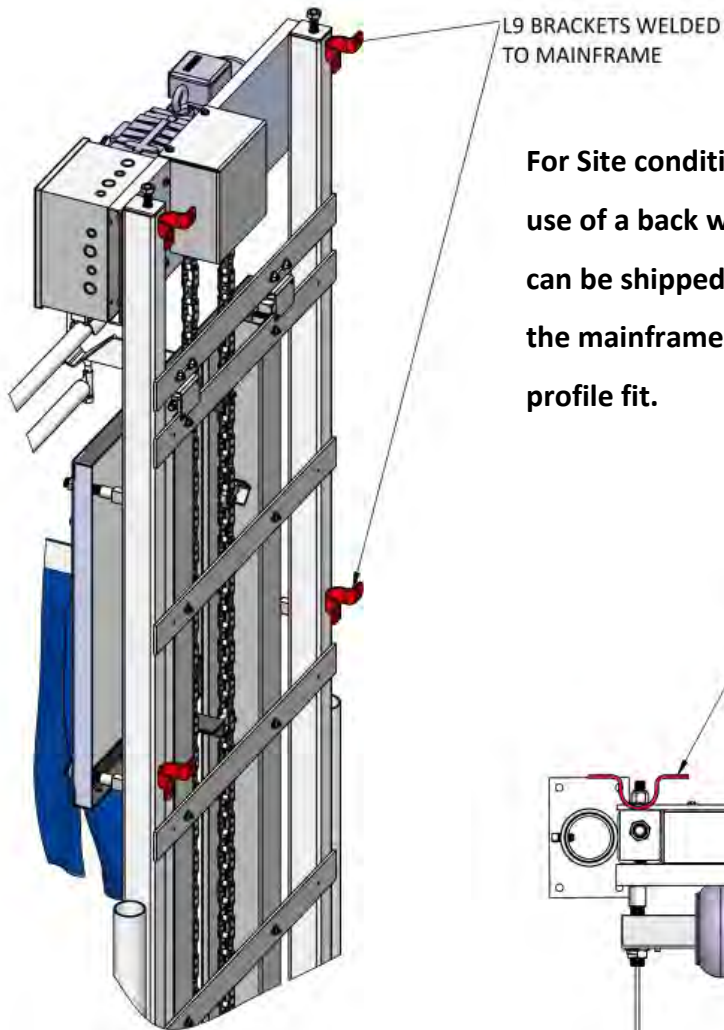
SWITCH AND CONTROL OPERATION



The angle iron tab is installed at locations that will determine the load platform's maximum travel. Another tab is installed on the other side of the chain meant for the other limit switch.

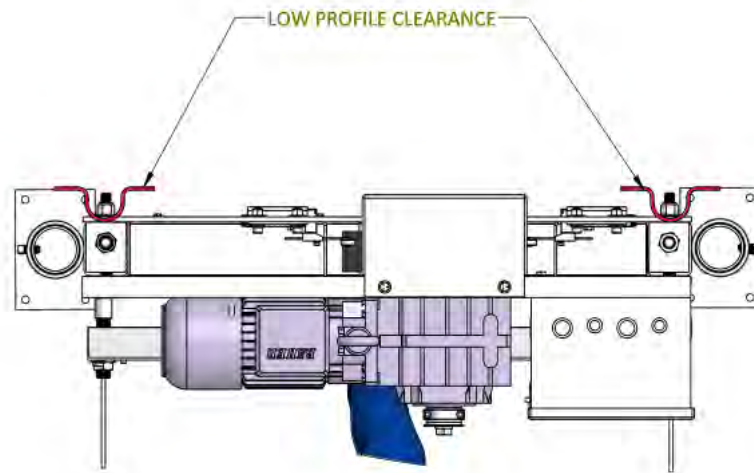
DESIGNED WITH COMPATABILITY IN MIND

Multiple securing methods to fit the needs of the installation site. Any ceiling, wall or other supporting members can be used to ensure a tailor made fit for any situation.



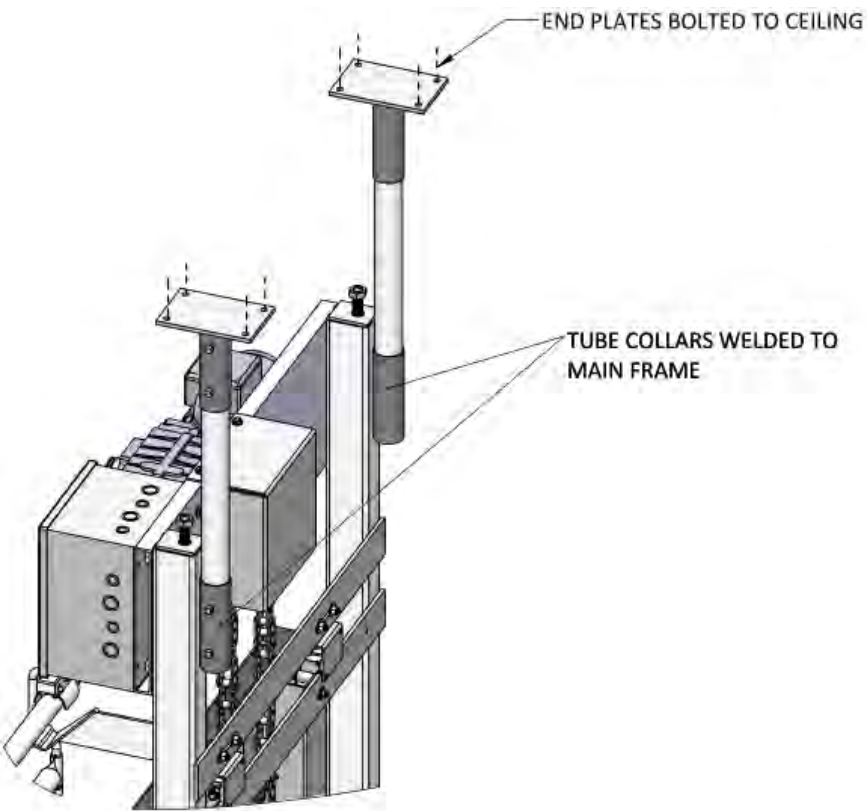
ISOMETRIC REAR VIEW

For Site conditions that allow the use of a back wall, L9 brackets can be shipped pre-welded to the mainframe to allow for a low profile fit.

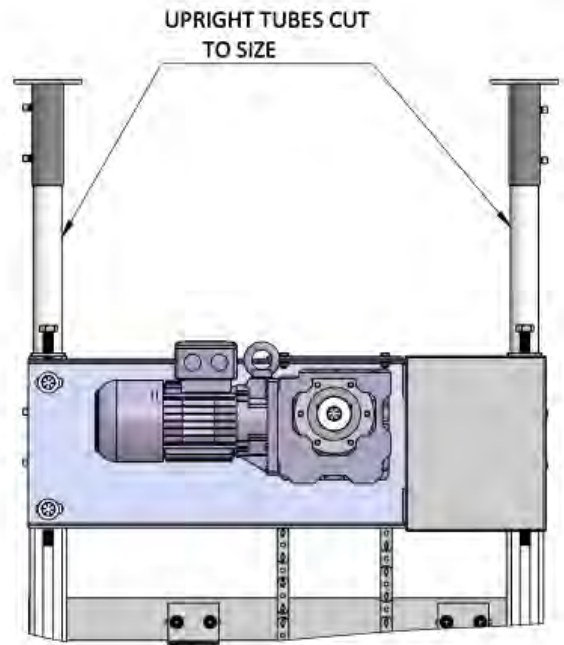


TOP VIEW

CEILING ATTACHMENT



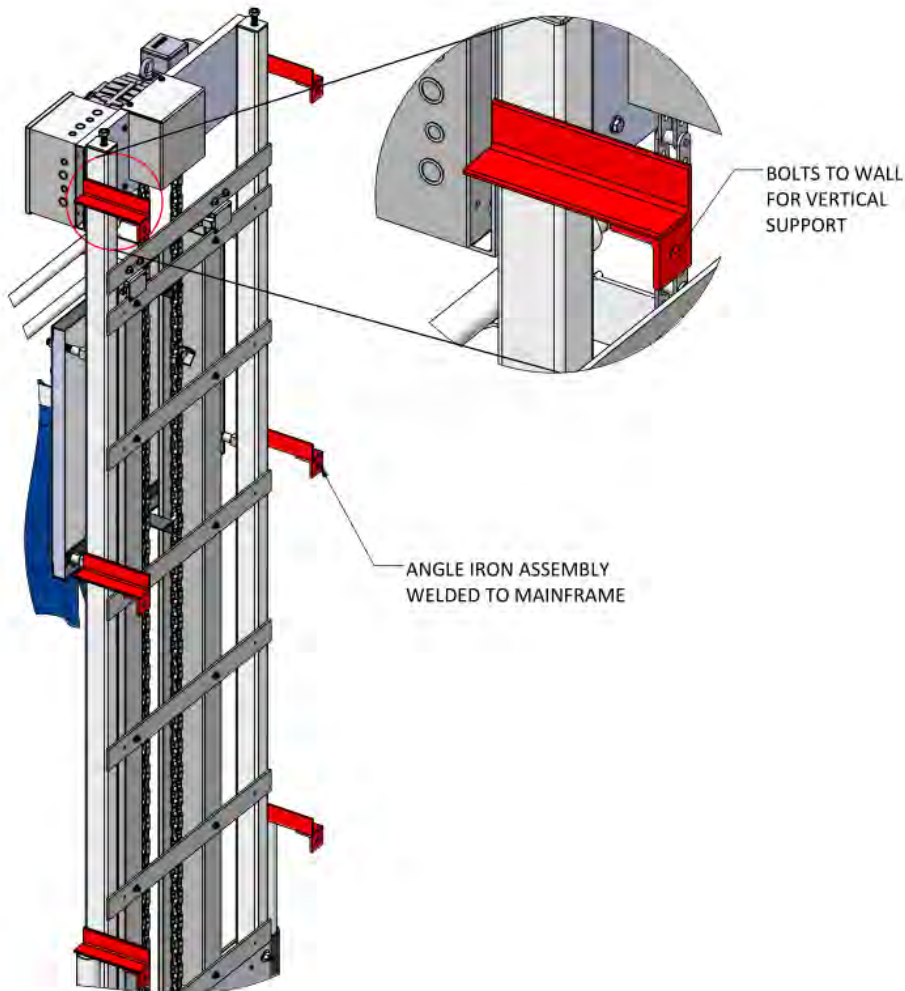
ISOMETRIC REAR VIEW



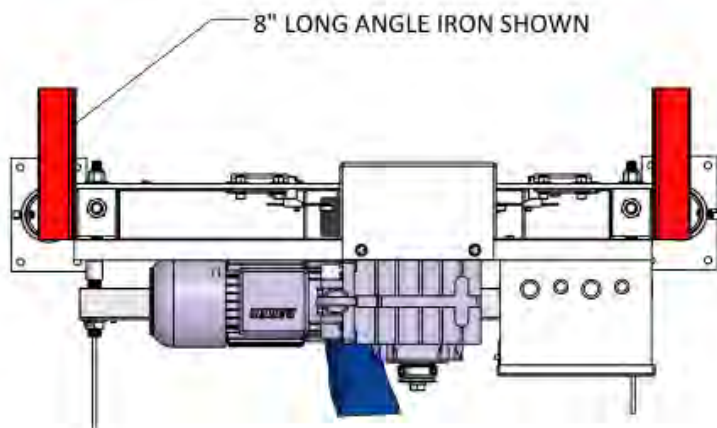
FRONT VIEW

For installation sites where a back wall cannot be utilized for securing the machine vertically, a second set of custom cut collar-torpedo uprights can be shipped along with the machine for ceiling attachment and fastening.

ANGLE IRON OFFSET TO BACKWALL ATTACHMENT

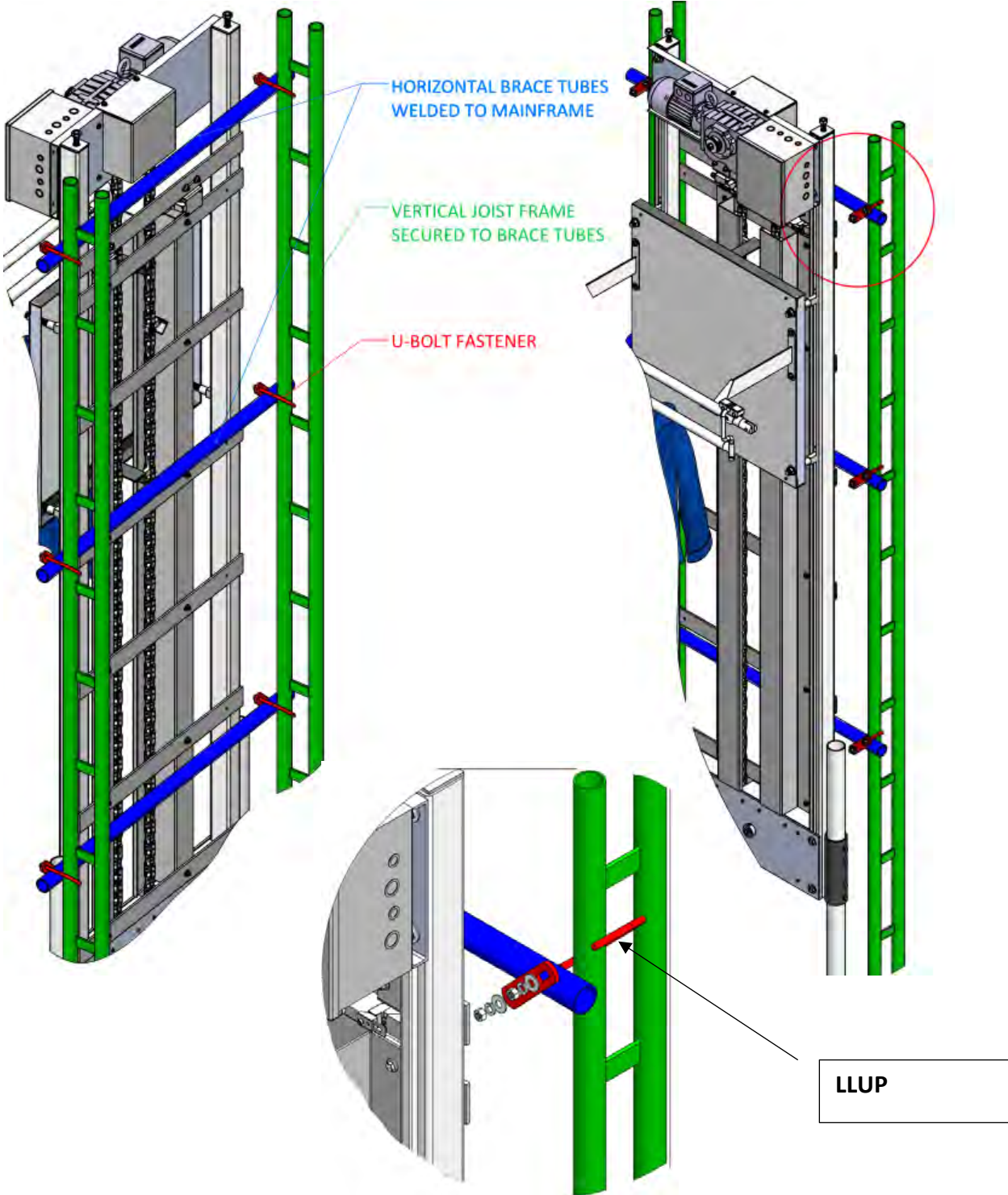


For greater clearance gaps between the back wall and the machine, custom cut angle iron weldments can be shipped and welded easily either on-site or pre-welded in house depending on your clearance needs.



TOP VIEW

TUBE JOIST FRAME ATTACHMENT



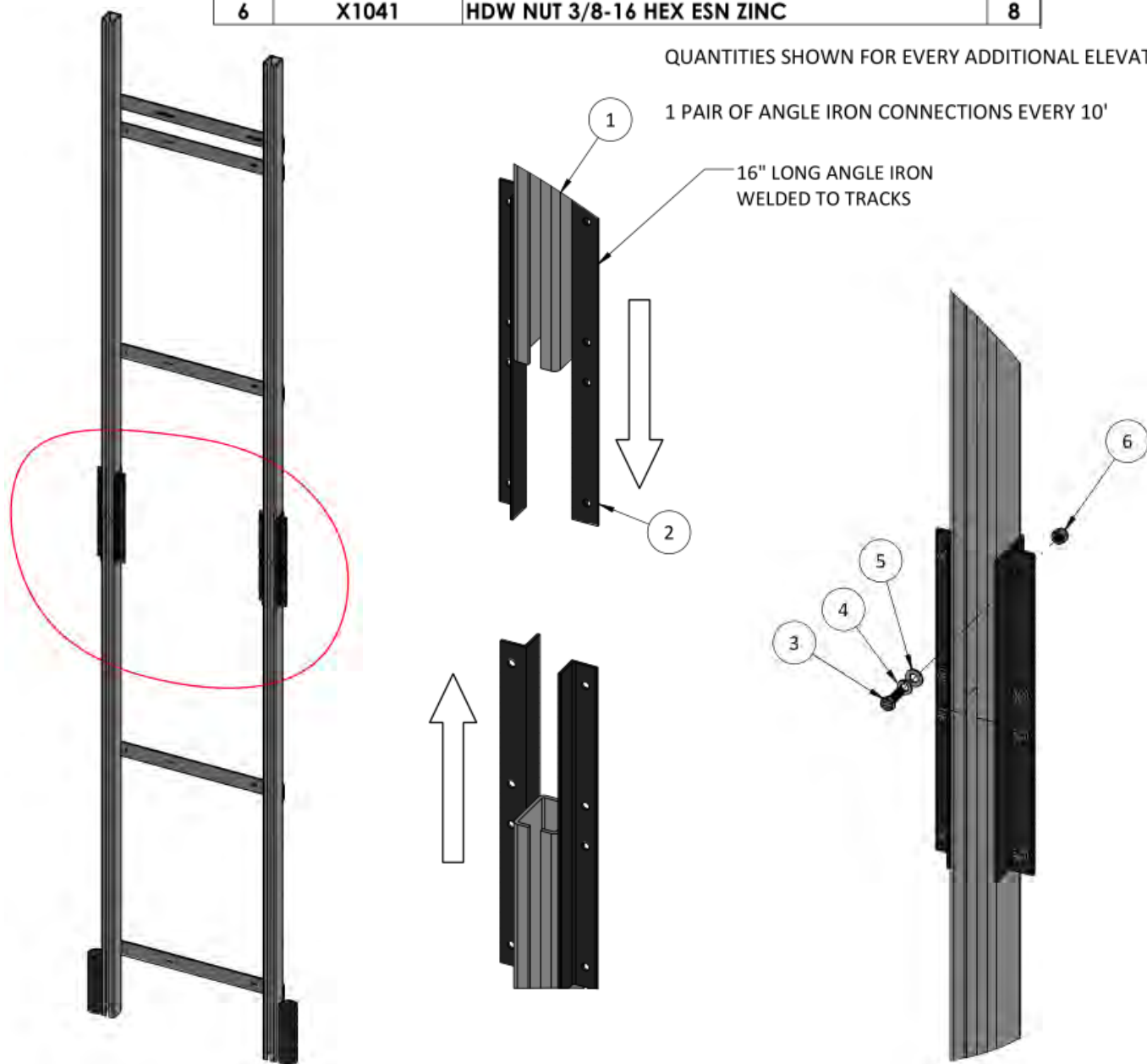
Tube Joist frames can be assembled quickly on site with sturdy U-bolt connections to fasten to pre-welded horizontal running KT Tubes. These horizontal tubes can be cut to custom lengths to allow for the joist frames to clear any obstructions between the machine and the back wall. Tube Joists can be attached to either floors, ceilings, or joined with other supporting brackets for back wall attachment.

TRACK CONNECTION

ITEM NO.	PART NUMBER	DESCRIPTION	QTY.
1	570-12503	570 TRACK UPRIGHT	2
2	570-12540	570 TRACK CONNECTION ANGLE IRON	4
3	X1042	HDW M.S 3/8-16 X 1" HEX ZINC	8
4	X1043	HDW WASHER 3/8" X .094" THK SPLIT LOCK	8
5	X1125	HDW WASHER 3/8" SAE FLAT ZINC	8
6	X1041	HDW NUT 3/8-16 HEX ESN ZINC	8

QUANTITIES SHOWN FOR EVERY ADDITIONAL ELEVATION

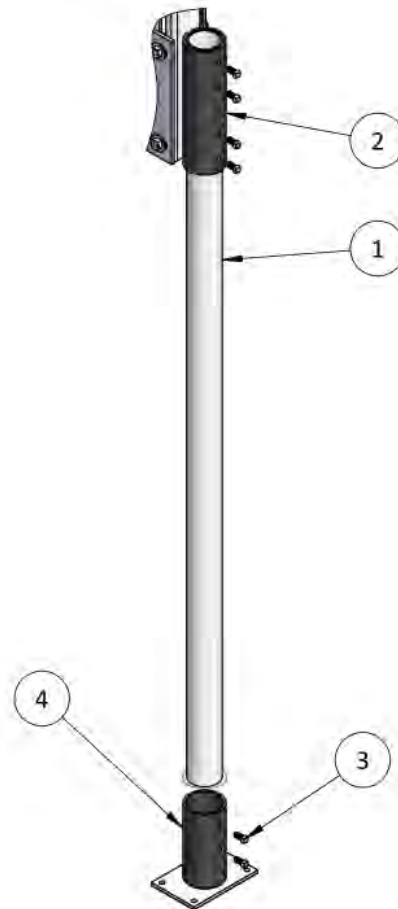
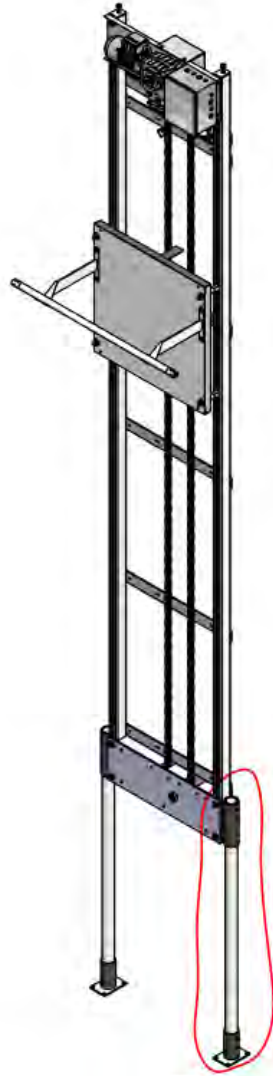
1 PAIR OF ANGLE IRON CONNECTIONS EVERY 10'



A 570 Vertical Lift will ship in sections according to the number of elevations you wish to be covered by the loaded garment platform. This Exploded Detail shows the connection that makes it possible. The example above shows the connection between two 7.5FT halves to make up a 15FT total track length. With these dimensions the load platform is able to travel 10FT between its two extremities.

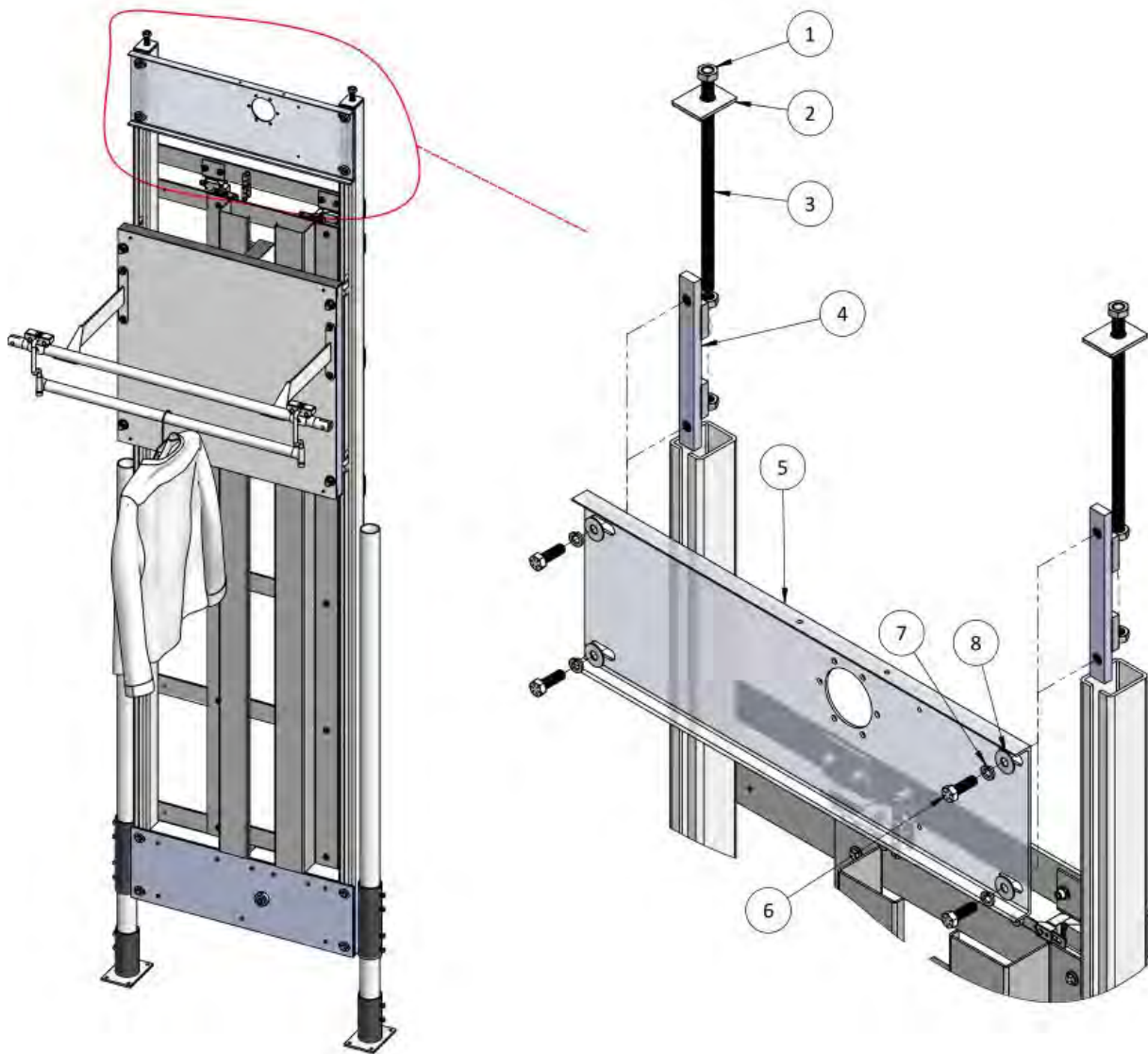
BASE FOOTING

ITEM NO.	PART NUMBER	DESCRIPTION	QTY.
1	QT60	QT TUBE 5' LONG	2
2	10112	QT COLLAR 10"	2
3	X1224	HDW M.S 3/8-16 X 3/4" SQ HEAD	12
4	570-12500	570 BASE ASSEMBLY	2



The square head set screws (Item 3) will set the height at which the lowest limit of the machine will be above the finish floor. Item 1 can be shipped in custom lengths to accommodate any installation scenario.

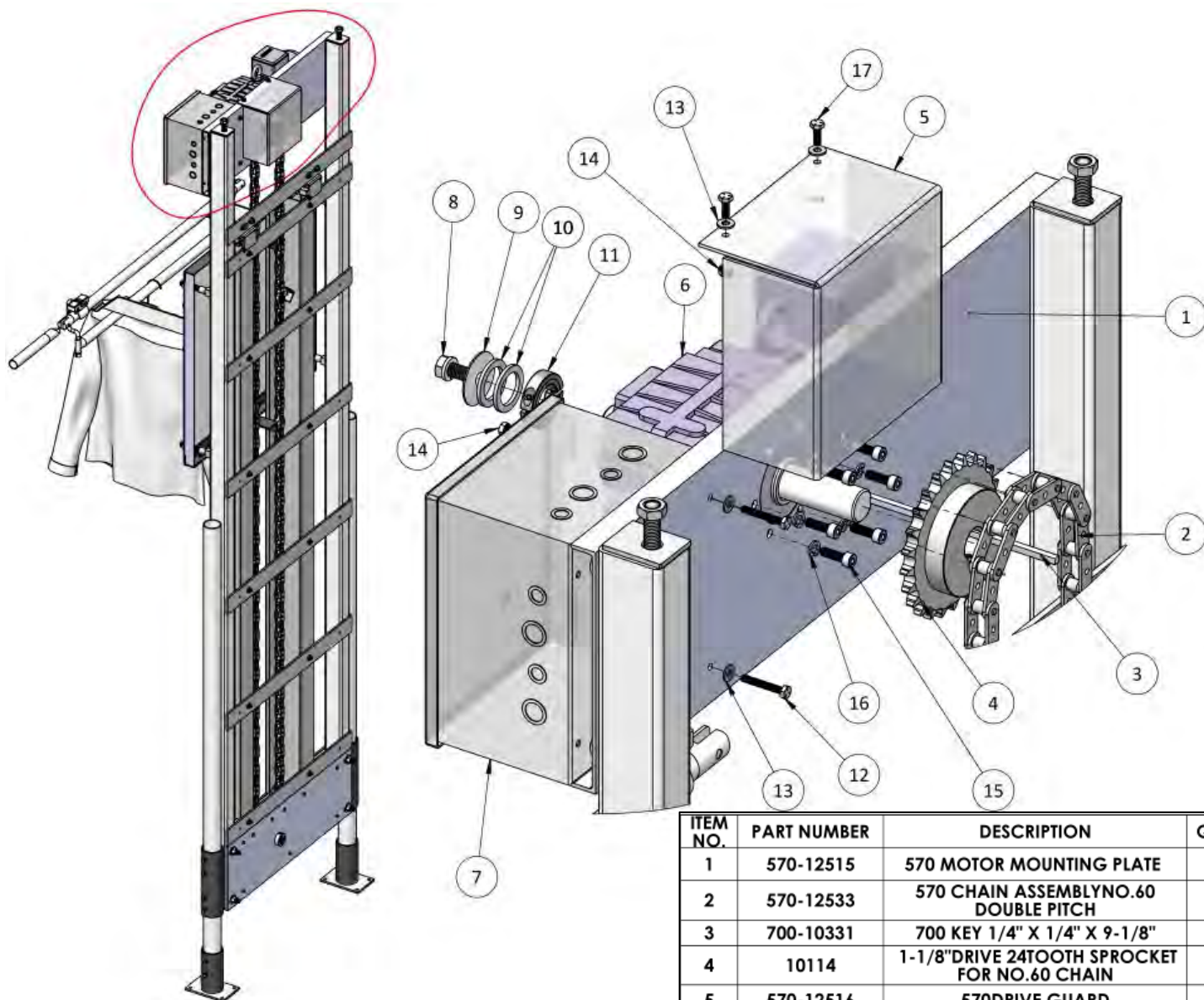
MOTOR MOUNT PLATE TAKE-UP



ITEM NO.	PART NUMBER	DESCRIPTION	QTY.
1	X1191	HDW NUT 5/8-11 HEX THIN	2
2	570-12522	570 TAKEUP ENDPLATE	2
3	570-12521	570 13" LG. TAKEUP ROD	2
4	570-12517	570 TAKEUP BAR WELDMENT	2
5	570-12515	570 MOTOR MOUNTING PLATE	1
6	X1025	HDW M.S 1/2-13 X 1-1/2" HEX ZINC	4
7	X1086	HDW WASHER 7/16" SPLIT LOCK	4
8	X1029	HDW WASHER 7/16" X 5/64" THK USS ZINC	4

The motor mounting plate (Item 5) will be secured to the weldment assembly (Items 1 through 4) by items 6 through 8. Once the chain is mounted on both sprockets, adjustment of the nut/rod weldment (items 1 through 3) ensures proper operating chain tension.

MOTOR MOUNT/DRIVE SPROCKET



ITEMS 15 & 16 IN CIRCULAR BOLT PATTERN

ITEM 14 INSTALLED ON OPPOSITE SIDE OF MOUNTING PLATE

Item 5 houses the sprocket/chain assembly and is fastened to item 1 by items 13 and 17.

NOTE: Assembly update to-do: Add shaft collars on either side of the drive sprocket to prevent forward/backward play. Set Screws on sprocket hub not sufficient.

ITEM NO.	PART NUMBER	DESCRIPTION	QTY.
1	570-12515	570 MOTOR MOUNTING PLATE	1
2	570-12533	570 CHAIN ASSEMBLY NO.60 DOUBLE PITCH	1
3	700-10331	700 KEY 1/4" X 1/4" X 9-1/8"	1
4	10114	1-1/8" DRIVE 24 TOOTH SPROCKET FOR NO.60 CHAIN	1
5	570-12516	570 DRIVE GUARD	1
6	10120	BRAKE & GEAR MOTOR 1/2 HP	1
7	10128	10" X 8" X 6" ENCLOSURE FOR 570	1
8	X1048	HDW M.S 1/2-13 X 1" HEX ZINC	1
9	X1084	HDW WASHER 1/2 X 2" OD FENDER ZINC	1
10	X1031	HDW SHIM 1.250" 1.750" X .136" THK	2
11	X1161	HDW COLLAR CLAMP 1-1/4"	1
12	X1102	HDW M.S 1/4-20 X 1-3/4" HEX ZINC	2
13	X1066	HDW WASHER 1/4" FLAT	4
14	X1103	HDW NUT 1/4-20 HEX EXT TOOTH LOCK ZINC	4
15	X1132	HDW M.S M8-1.25 X 25MM SOCKET HEAD CAP CLASS 10.9	6
16	X1160	HDW WASHER M8 SPLIT LOCK ZINC	6
17	FBH2575	HDW M.S 1/4-20 X 3/4" HEX ZINC	2

IDLER SPROCKET/SHAFT

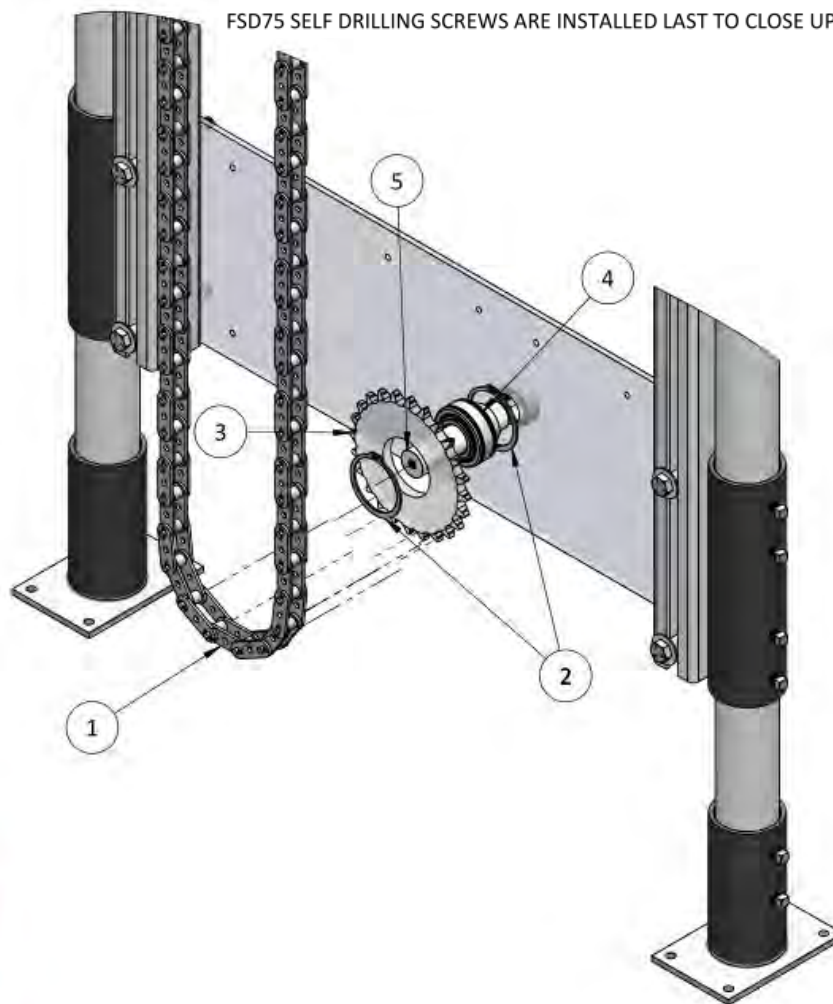
SHAFT AND SPROCKET ASSEMBLY MOUNTED TO REAR FACING IDLER PLATE FIRST.

BEARING SECURED TO SHAFT BY INTEGRATED SET SCREWS.

FRONT END IS LEFT OPEN TO ALLOW FRONT FACING IDLER PLATE INSTALLATION.

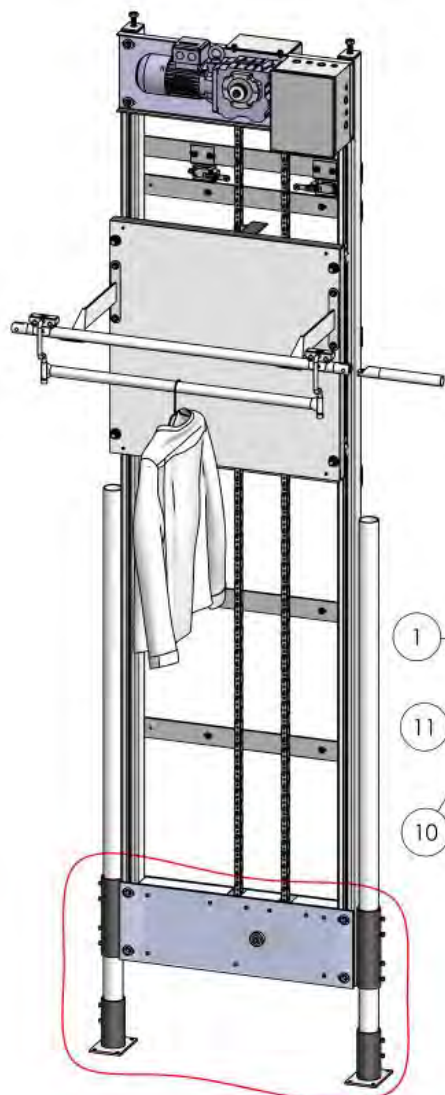
CHAIN IS PUT ONTO SPROCKET BEFORE IDLER GUARDS ARE PUT IN PLACE.

FSD75 SELF DRILLING SCREWS ARE INSTALLED LAST TO CLOSE UP IDLER ASSEMBLY.



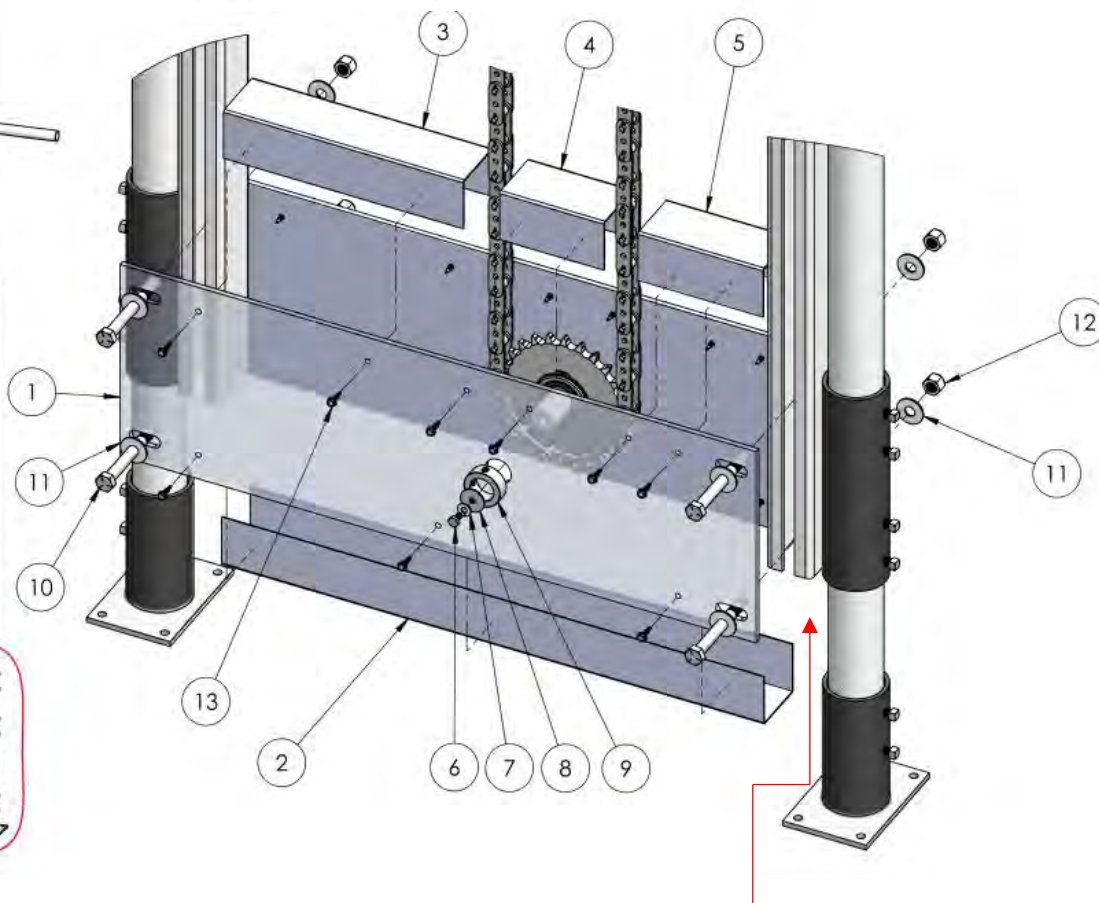
ITEM NO.	PART NUMBER	DESCRIPTION	QTY.
1	570-12533	570 CHAIN ASSEMBLY	1
2	10116	2-7/16" RETAINING RING	2
3	570-12509	570 IDLER SPROCKET	1
4	10113	1-1/8" SHAFT BEARING FOR SPROCKET	1
5	570-12508	570 IDLER SHAFT 1-1/8" I.D. X 4" LONG	1

IDLER PLATE AND GUARDS



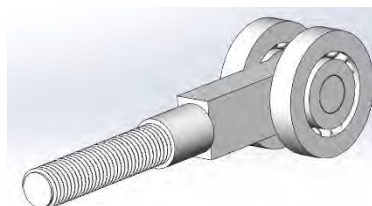
ITEMS 6-9, AND 13 REPEATED ON REAR FACING IDLER PLATE

ITEMS 2-5 SANDWICHED BETWEEN IDLER PLATES AND SECURED BY ITEM 13

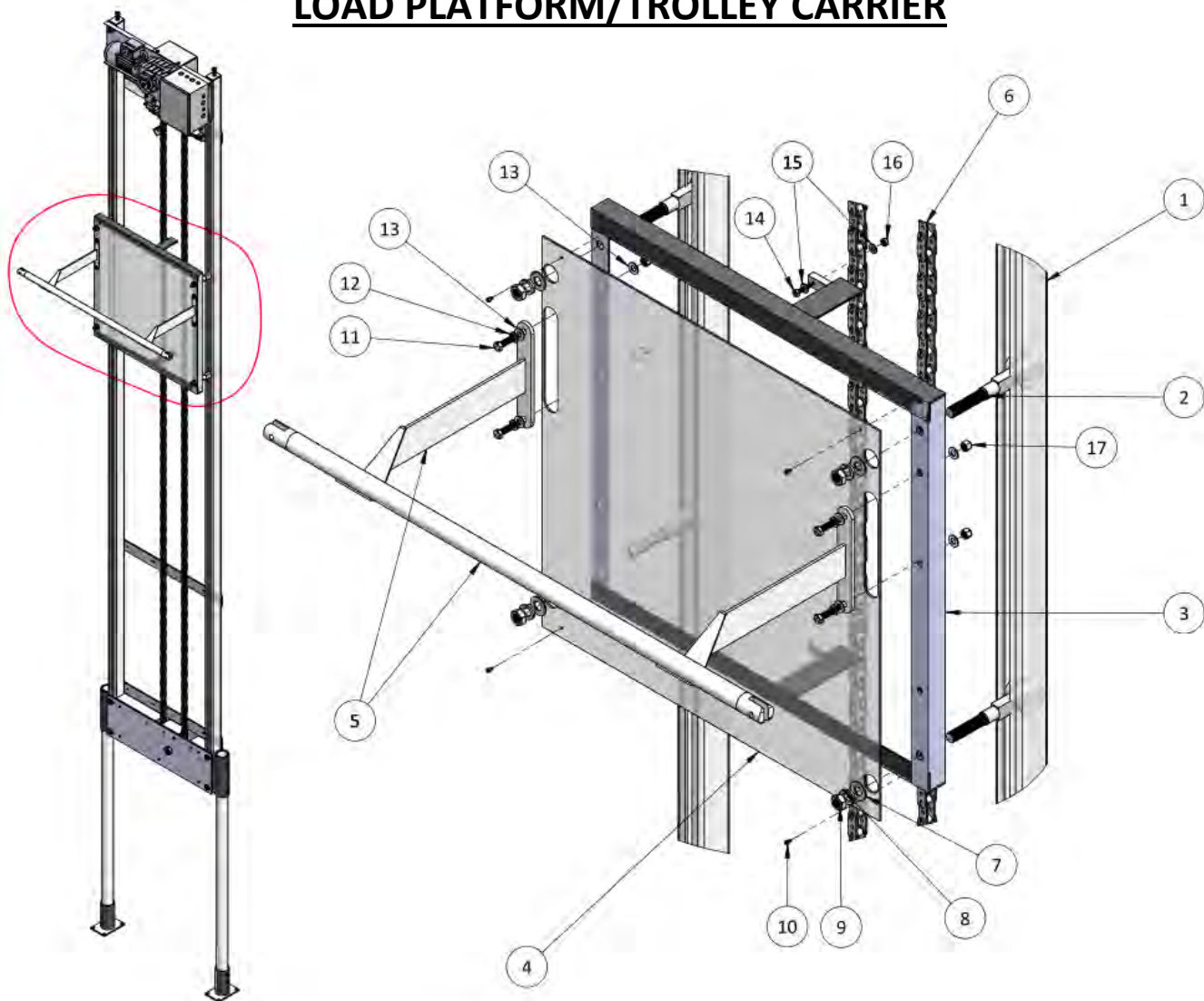


ITEM NO.	PART NUMBER	DESCRIPTION	QTY.
1	570-12510	570 IDLER MOUNTING PLATE	1
2	570-12511	570 BOTTOM IDLER GUARD 26" LNG.	1
3	570-12512	570 TOP IDLER GUARD 11-1/2" LNG.	1
4	570-12513	570 TOP IDLER GUARD 5" LNG.	1
5	570-12514	570 TOP IDLER GUARD 6" LNG.	1
6	X1023	HDW M.S 1/4-20 X 1/2" HEX ZINC	1
7	X1052	HDW WASHER 1/4" SPLIT LOCK	1
8	X1228	HDW WASHER 1/4" X 1-1/8" OD .073" THK	1
9	X1203	HDW COLLAR SET SCREW 1-1/8"	1
10	X1223	HDW M.S 1/2-13 X 4-1/2" HEX PARTIAL THREAD ZINC	4
11	X1029	HDW WASHER 7/16" X 5/64" THK USS ZINC	8
12	X1047	HDW NUT 1/2-13 HEX ESN ZINC	4
13	FSD75	HDW M.S #10-32 X 3/4" SELF DRILL ZINC	18

NOTE: Track Wheel (Part no. 10129) must be installed in the track's free end **BEFORE** closing up the Idler end of the 570 machine.



LOAD PLATFORM/TROLLEY CARRIER



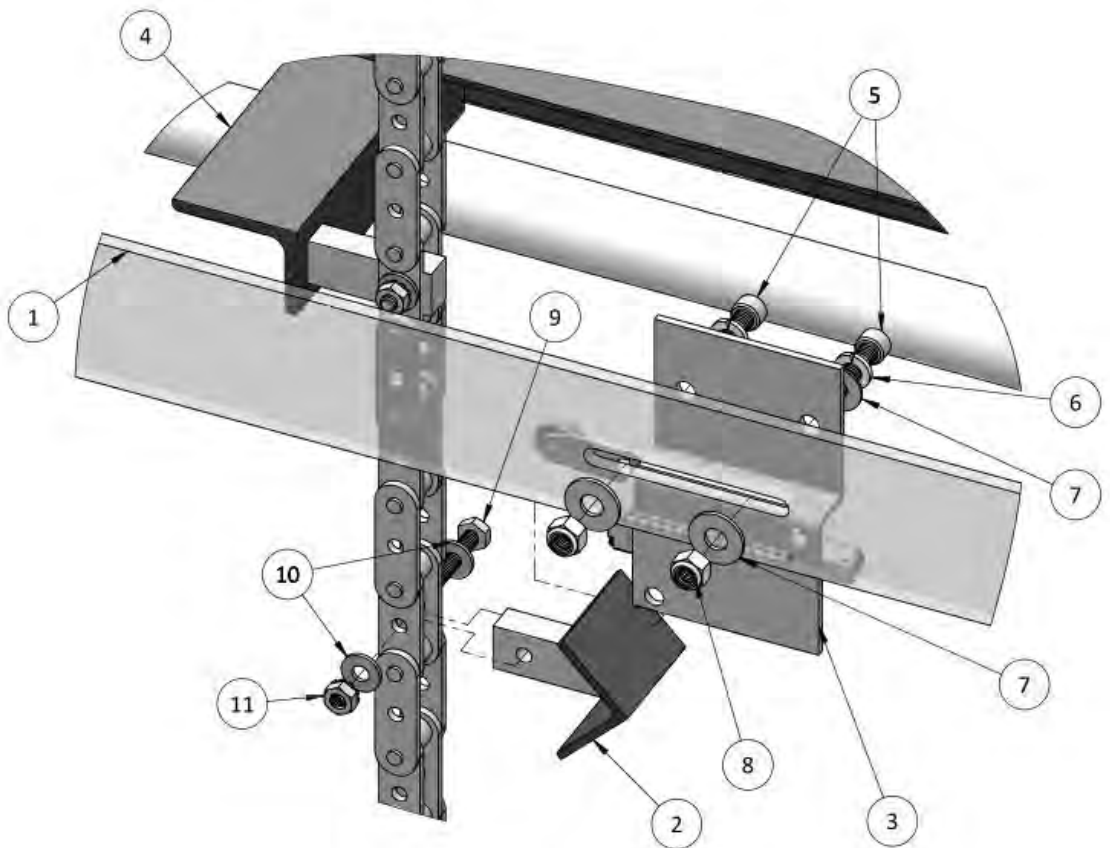
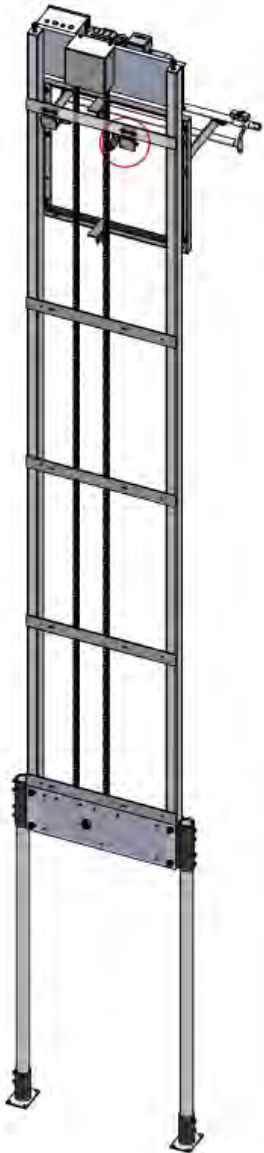
ITEM NO.	PART NUMBER	DESCRIPTION	QTY.
1	570-12503	570 TRACK UPRIGHT	4
2	10129	570 TRACK WHEEL	4
3	570-12526	570 LOAD PLATFORM ASSEMBLY	1
4	570-12539	570 LOAD PLATFORM VINYL COVER	1
5	570-12536	570 TROLLEY CARRIER ASSEMBLY	1
6	570-12533	570 CHAIN ASSEMBLY	1
7	X1033	HDW WASHER 5/8" X 3/32" THK SAE ZINC	4
8	X1054	HDW WASHER 5/8" SPLIT LOCK ZINC	4
9	X1191	HDW NUT 5/8-11 HEX THIN	4
10	X1127	HDW M.S #8-32 X 1/4" SOCKET HEAD CAP	4
11	X1101	HDW M.S 3/8-16 X 1-1/4" HEX ZINC	4
12	X1043	HDW WASHER 3/8" X .094" THK SPLIT LOCK	4
13	X1125	HDW WASHER 3/8" X .094" THK SPLIT LOCK	8
14	X1020	HDW M.S 1/4-20 X 1-1/4" HEX ZINC	2
15	X1066	HDW WASHER 1/4" FLAT	4
16	X1103	HDW NUT 1/4-20 HEX EXT TOOTH LOCK ZINC	2
17	X1041	HDW NUT 3/8-16 HEX ESN ZINC	4

ITEM 2 INSTALLED AT TRACK ENDS BEFORE THEY ARE CLOSED OFF BY TAKEUP END PLATE AND IDLER ASSEMBLY GUARDS.

ITEM 4 SECURED TO ITEM 3 BY ITEM 10.

ITEM 3 SECURED TO ITEM 6 BY ITEMS 14-16 AT TWO ENDS OF THE ASSEMBLY.

LIMIT SWITCH MOUNT



ASSEMBLY SHOWN MIRRORS THE OTHER LIMIT SWITCH MOUNTED ON THE OPPOSITE SIDE OF THE CHAIN.

ITEMS 2 AND 4 ARE MOUNTED ON ONE STRAND OF CHAIN
INSTALLATION LOCATION OF ITEM 2 DICTATES UPPER LIMIT
OF LOAD PLATFORM TRAVEL.

ITEM 2 TRIPS THE LIMIT SWITCH MOUNTED ONTO ITEM 3
ONCE UPPER LIMIT HAS BEEN REACHED.

ITEM NO.	PART NUMBER	DESCRIPTION	QTY.
1	570-12507	570 SENSOR MOUNT BRACE BAR	1
2	570-12534	570 LIMIT SWITCH ANGLE IRON WELDMENT	2
3	570-12523	570 SENSOR MOUNT WELDMENT	2
4	570-12526	570 LOAD PLATFORM ASSEMBLY	1
5	X1221	HDW M.S 5/16-18 X 1" SOCKET HEAD CAP	4
6	X1038	HDW WASHER 5/16" SPLIT LOCK ZINC	4
7	X1129	HDW WASHER 5/16" FLAT ZINC	8
8	X1039	HDW NUT 5/16-18 HEX ESN ZINC 11/32" HIGH	4
9	X1020	HDW M.S 1/4-20 X 1-1/4" HEX ZINC	2
10	X1066	HDW WASHER 1/4" FLAT	4
11	X1103	HDW NUT 1/4-20 HEX EXT TOOTH LOCK ZINC	2